



## Synonym

SDC1, Syndecan-1, CD138, SYND1, SDC

## Source

Human Syndecan-1, His Tag(SY1-H5225) is expressed from human 293 cells (HEK293). It contains AA Gln 23 - Gly 254 (Accession # [P18827-1](#)).

Predicted N-terminus: Gln 23

## Molecular Characterization

Syndecan-1(Gln 23 - Gly 254) P18827-1	Poly- his
--	--------------

This protein carries a polyhistidine tag at the C-terminus.

The protein has a calculated MW of 25.8 kDa. The protein migrates as 40-55 kDa under reducing (R) condition (SDS-PAGE) due to glycosylation.

## Endotoxin

Less than 0.1 EU per µg by the LAL method / rFC method.

## Purity

>90% as determined by SDS-PAGE.

## Formulation

Lyophilized from 0.22 µm filtered solution in PBS, pH7.4 with trehalose as protectant.

Contact us for customized product form or formulation.

## Reconstitution

Please see Certificate of Analysis for specific instructions.

*For best performance, we strongly recommend you to follow the reconstitution protocol provided in the CoA.*

## Storage

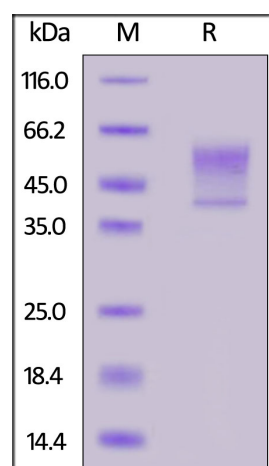
For long term storage, the product should be stored at lyophilized state at -20°C or lower.

*Please avoid repeated freeze-thaw cycles.*

This product is stable after storage at:

- -20°C to -70°C for 12 months in lyophilized state;
- -70°C for 3 months under sterile conditions after reconstitution.

## SDS-PAGE



Human Syndecan-1, His Tag on SDS-PAGE under reducing (R) condition. The gel was stained with Coomassie Blue. The purity of the protein is greater than 90%.

## Bioactivity-ELISA

Discounts, Gifts,  
and more!

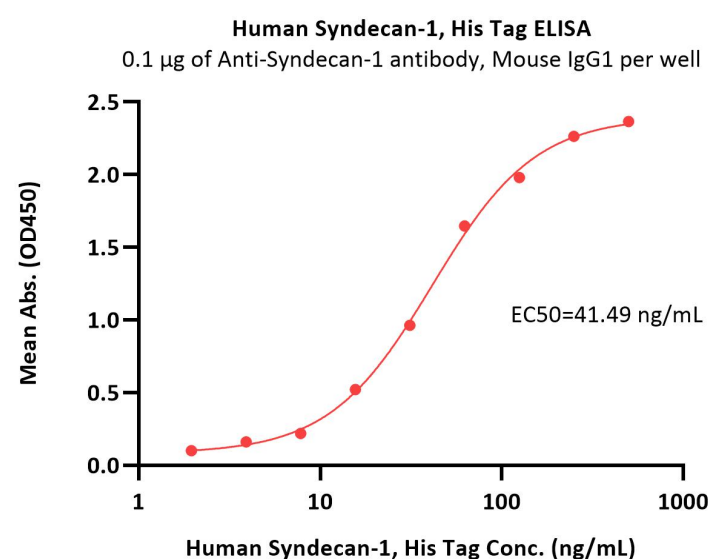
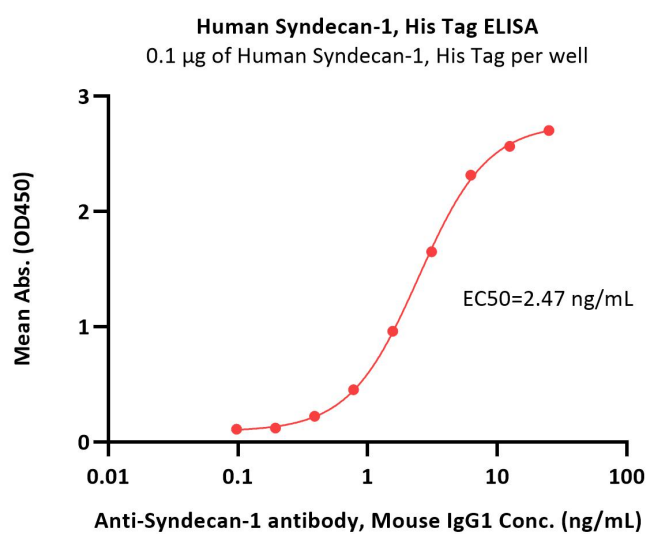


# Human Syndecan-1 Protein, His Tag

Catalog # SY1-H5225



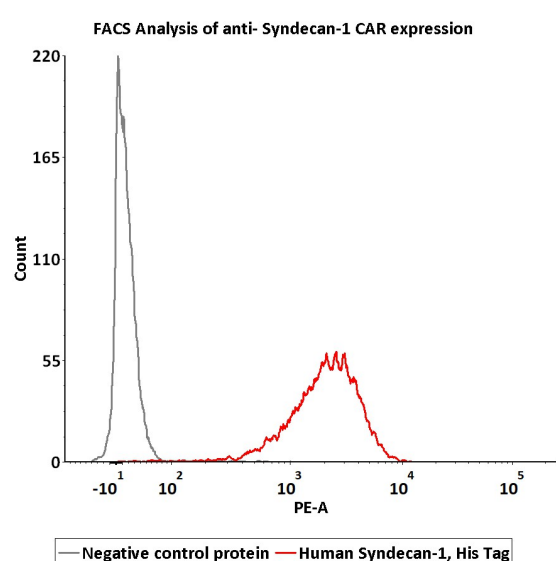
BIOSYSTEMS  
**Acro**



Immobilized Human Syndecan-1, His Tag (Cat. No. SY1-H5225) at 1 µg/mL (100 µL/well) can bind Anti-Syndecan-1 antibody, Mouse IgG1 with a linear range of 0.1-3 ng/mL (QC tested).

Immobilized Anti-Syndecan-1 antibody, Mouse IgG1 at 1 µg/mL (100 µL/well) can bind Human Syndecan-1, His Tag (Cat. No. SY1-H5225) with a linear range of 2-125 ng/mL (Routinely tested).

## Bioactivity-FACS



2e5 of anti-Syndecan-1 CAR-293 cells were stained with 100 µL of 3 µg/mL of Human Syndecan-1, His Tag (Cat. No. SY1-H5225) and negative control protein respectively, washed and then followed by PE anti-His Tag antibody and analyzed with FACS (Routinely tested).

## Background

Syndecan-1 (SYND1 or SDC1) is also known as CD antigen CD138, is a transmembrane (type I) heparan sulfate proteoglycan and is a member of the syndecan proteoglycan family. The syndecans mediate cell binding, cell signaling, and cytoskeletal organization and syndecan receptors are required for internalization of the HIV-1 tat protein. The syndecan-1 / SDC1 protein functions as an integral membrane protein and participates in cell proliferation, cell migration and cell-matrix interactions via its receptor for extracellular matrix proteins. It is a useful marker for plasma cells, but only if the cells tested are already known to be derived from blood.

Discounts, Gifts,  
and more!



[www.acrobiosystems.com](http://www.acrobiosystems.com)

4/21/2025