



## Synonym

SLITRK6

## Source

Human SLITRK6, Mouse IgG2a Fc Tag(SL6-H5255) is expressed from human 293 cells (HEK293). It contains AA Ser 27 - Ser 608 (Accession # [Q9H5Y7-1](#)).

Predicted N-terminus: Ser 27

## Molecular Characterization

SLITRK6(Ser 27 - Ser 608) Q9H5Y7-1	mFc(Glu 98 - Lys 330) P01863
---------------------------------------	---------------------------------

This protein carries a mouse IgG2a Fc tag at the C-terminus.

The protein has a calculated MW of 91.7 kDa. The protein migrates as 100-110 kDa under reducing (R) condition (SDS-PAGE) due to glycosylation.

## Endotoxin

Less than 0.1 EU per µg by the LAL method.

## Purity

>95% as determined by SDS-PAGE.

>90% as determined by SEC-MALS.

## Formulation

Lyophilized from 0.22 µm filtered solution in PBS, pH 7.4 with trehalose as protectant.

Contact us for customized product form or formulation.

## Reconstitution

Please see Certificate of Analysis for specific instructions.

*For best performance, we strongly recommend you to follow the reconstitution protocol provided in the CoA.*

## Storage

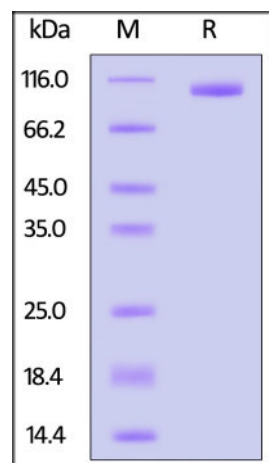
For long term storage, the product should be stored at lyophilized state at -20°C or lower.

*Please avoid repeated freeze-thaw cycles.*

This product is stable after storage at:

- -20°C to -70°C for 12 months in lyophilized state;
- -70°C for 3 months under sterile conditions after reconstitution.

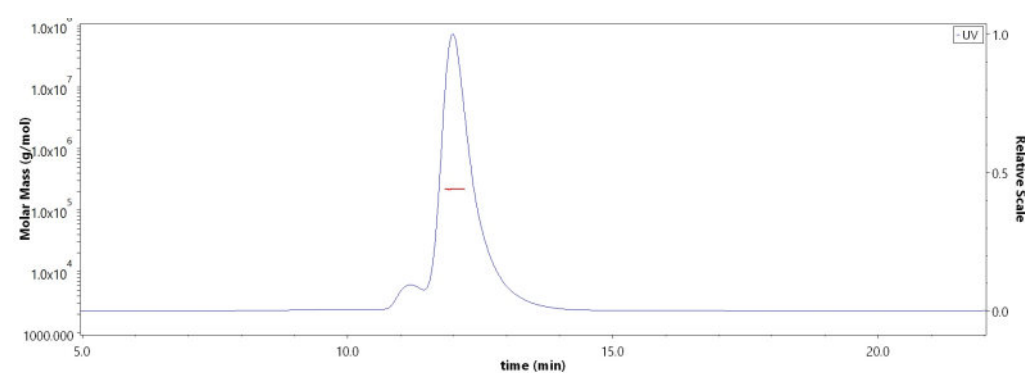
## SDS-PAGE



Human SLITRK6, Mouse IgG2a Fc Tag on SDS-PAGE under reducing (R) condition. The gel was stained with Coomassie Blue. The purity of the protein is greater than 95%.

## Bioactivity-ELISA

## SEC-MALS



The purity of Human SLITRK6, Mouse IgG2a Fc Tag (Cat. No. SL6-H5255) is more than 90% and the molecular weight of this protein is around 196-239 kDa verified by SEC-MALS.

[Report](#)

Discounts, Gifts,  
and more!

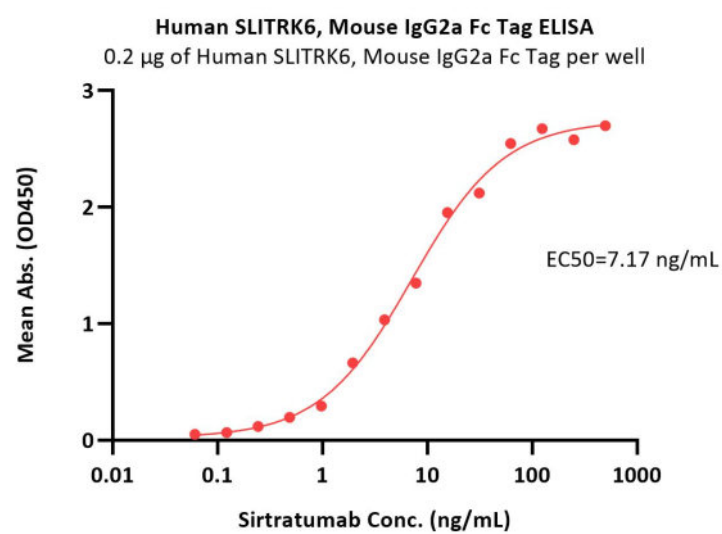


# Human SLITRK6 Protein, Mouse IgG2a Fc Tag (MALS verified)

Catalog # SL6-H5255



BIOSYSTEMS  
**Acro**



Immobilized Human SLITRK6, Mouse IgG2a Fc Tag (Cat. No. SL6-H5255) at 2 µg/mL (100 µL/well) can bind Sirtratumab with a linear range of 0.06-31 ng/mL (QC tested).

## Background

SLIT and NTRK-like protein 6 (SLITRK6) belongs to the SLITRK family. SLITRK6 contains 11 LRR (leucine-rich) repeats, two LRRCT domains and two LRRNT domains. In adult brain, SLITRK6 is highly expressed in putamen and also is expressed in adult, fetal lung and fetal liver. SLITRK6 is also expressed at high levels in some brain tumors. Overexpression of SLITRK6 inhibits neurite outgrowth in cultured neurons.

## Clinical and Translational Updates

Discounts, Gifts,  
and more!



➤ [www.acrobiosystems.com](http://www.acrobiosystems.com)

7/15/2024