



Source

Anti-Rituximab Antibody (AY36) is a Mouse monoclonal antibody produced from a hybridoma created by fusing SP2/0 myeloma and Mouse B-lymphocytes.

Clone

AY36

Species

Mouse

Isotype

Mouse IgG1/kappa

Antibody Type

Hybridoma Monoclonal

Reactivity

Human

Immunogen

Rituximab.

Specificity

Recognizes Rituximab specifically.

Application

| Application | Recommended Usage |
|-------------|-------------------|
| ELISA | 20-20000 ng/mL |

Purity

>95% as determined by SDS-PAGE.

Purification

Protein A purified / Protein G purified

Formulation

Lyophilized from 0.22 μ m filtered solution in Tris with Glycine, Arginine and NaCl, pH7.5 with trehalose as protectant.

Contact us for customized product form or formulation.

Reconstitution

Please see Certificate of Analysis for specific instructions.

For best performance, we strongly recommend you to follow the reconstitution protocol provided in the CoA.

Storage

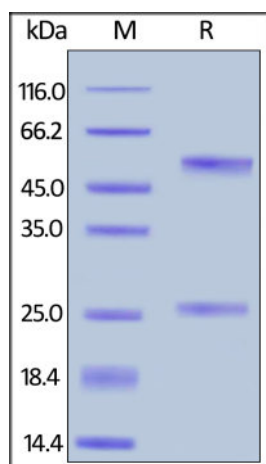
For long term storage, the product should be stored at lyophilized state at -20°C or lower.

Please avoid repeated freeze-thaw cycles.

This product is stable after storage at:

- $4-8^{\circ}\text{C}$ for 12 months in lyophilized state;
- -70°C for 12 months under sterile conditions after reconstitution.

SDS-PAGE



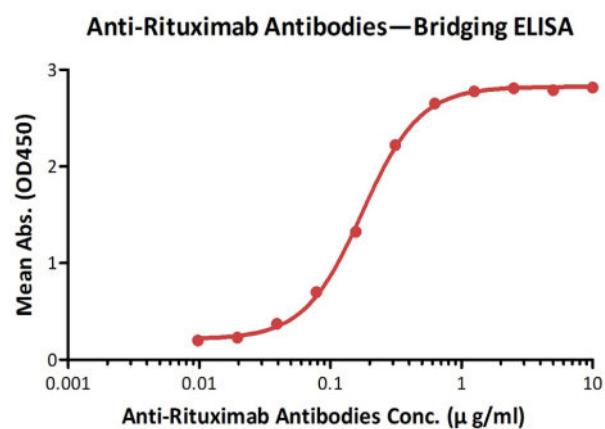
Anti-Rituximab Antibody (AY36) on SDS-PAGE under reducing (R) condition. The gel was stained with Coomassie Blue. The purity of the protein is greater than 95%.

Discounts, Gifts,
and more!

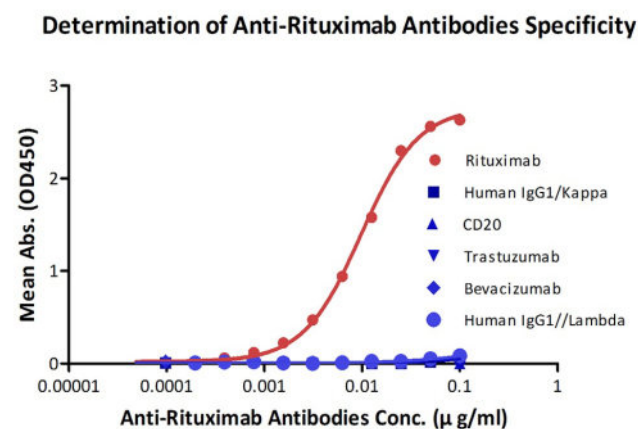




Bioactivity-ELISA

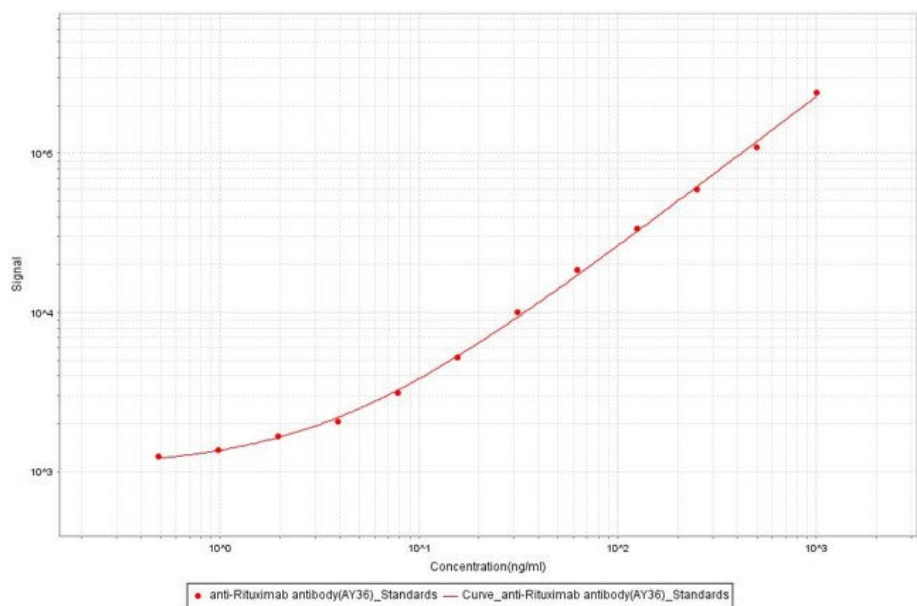


Anti-Rituximab Antibodies bridging ELISA for Anti-Drug Antibody (ADA) assay development. Immobilized rituximab at 1 µg/mL, add increasing concentrations of Anti-Rituximab Antibody (AY36) (Cat. No. RIB-Y36, 10% human serum) and then add biotinylated rituximab at 2 µg/mL. Detection was performed using HRP-conjugated streptavidin with a sensitivity of 9.7 ng/mL (QC tested).



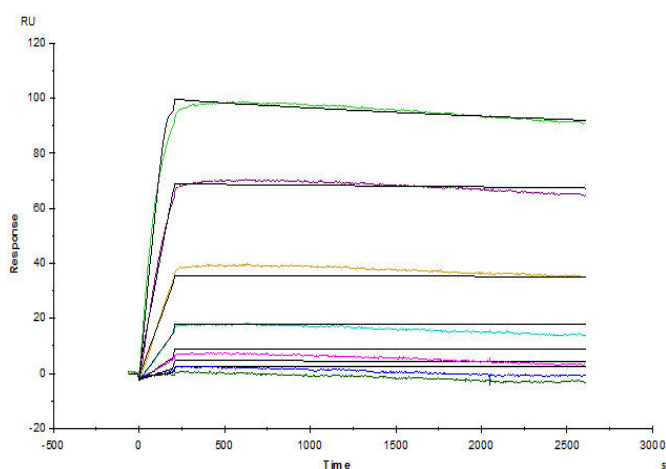
Demonstration of the specificity of Anti-Rituximab Antibody (AY36) (Cat. No. RIB-Y36) to the rituximab.

Bioactivity-MSD



Anti-Rituximab Antibodies bridging MSD for Anti-Drug Antibody (ADA) assay development. Added the mix solution (biotinylated Rituximab at 5 µg/mL, SULFO-Rituximab at 5 µg/mL and increasing concentrations of Anti-Rituximab Antibody (AY36) (Cat. No. RIB-Y36, 100% human serum). Detection was performed using MSD Assay with a sensitivity of 0.97 ng/mL.

Bioactivity-SPR



Discounts, Gifts, and more!



Anti-Rituximab Antibody (AY36) (recommended for ADA assay)

Catalog # RIB-Y36



BIOSYSTEMS
Acro

Anti-Rituximab Antibody (AY36) (mouse IgG1, Cat. No. RIB-Y36) captured on CM5 chip via anti-mouse antibodies surface, can bind human rituximab with an affinity constant of 0.01 nM.

Background

Rituxan is a genetically engineered chimeric murine/human monoclonal antibody directed against the CD20 antigen found on the surface of normal and malignant B lymphocytes. The antibody is an IgG1 kappa immunoglobulin containing murine light- and heavy-chain variable region sequences and human constant region sequences. Rituximab is composed of two heavy chains of 451 amino acids and two light chains of 213 amino acids

Discounts, Gifts,
and more!



➤ www.acrobiosystems.com

4/25/2025