



Source

Anti-Rituximab Antibody is a Mouse monoclonal antibody recombinantly expressed from HEK293 cells.

Species

Mouse

Isotype

Mouse IgG1 | Mouse Kappa

Antibody Type

Recombinant Monoclonal

Reactivity

Human

Immunogen

Rituximab.

Specificity

Recognizes Rituximab specifically.

Application

Application	Recommended Usage
ELISA	0.2-50 ng/mL

Purity

>95% as determined by SDS-PAGE.

>90% as determined by SEC-MALS.

Purification

Protein A purified / Protein G purified

Formulation

Lyophilized from 0.22 µm filtered solution in PBS, pH7.4 with trehalose as protectant.

Contact us for customized product form or formulation.

Reconstitution

Please see Certificate of Analysis for specific instructions.

For best performance, we strongly recommend you to follow the reconstitution protocol provided in the CoA.

Storage

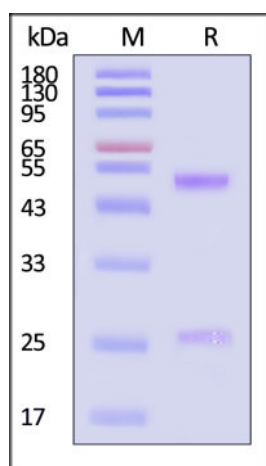
For long term storage, the product should be stored at lyophilized state at -20°C or lower.

Please avoid repeated freeze-thaw cycles.

This product is stable after storage at:

- 4-8°C for 12 months in lyophilized state;
- -70°C for 12 months under sterile conditions after reconstitution.

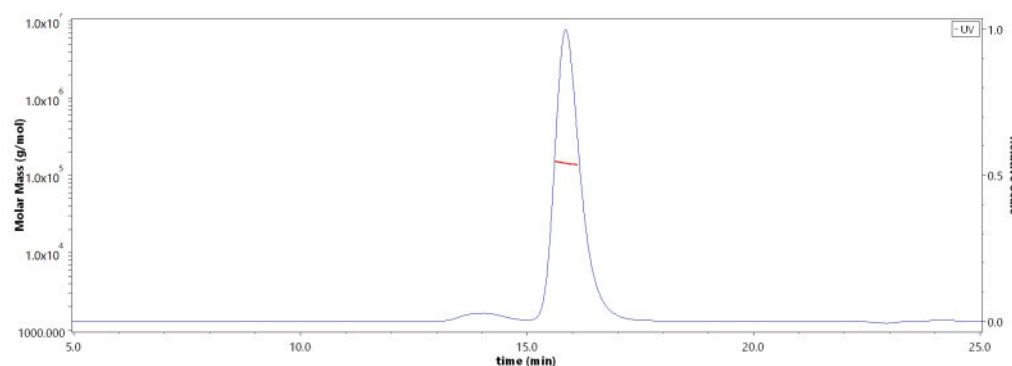
SDS-PAGE



Anti-Rituximab Antibody on SDS-PAGE under reducing (R) condition. The gel was stained with Coomassie Blue. The purity of the protein is greater than 95% (With [Star Ribbon Pre-stained Protein Marker](#)).

Bioactivity-ELISA

SEC-MALS

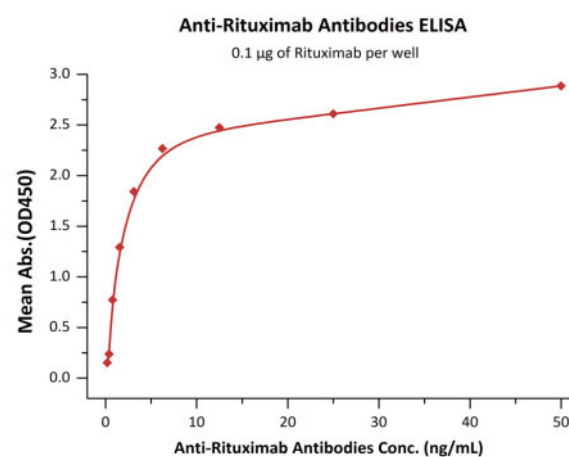


The purity of Anti-Rituximab Antibody (Cat. No. RIB-Y35c) is more than 90% and the molecular weight of this protein is around 135-155 kDa verified by SEC-MALS.

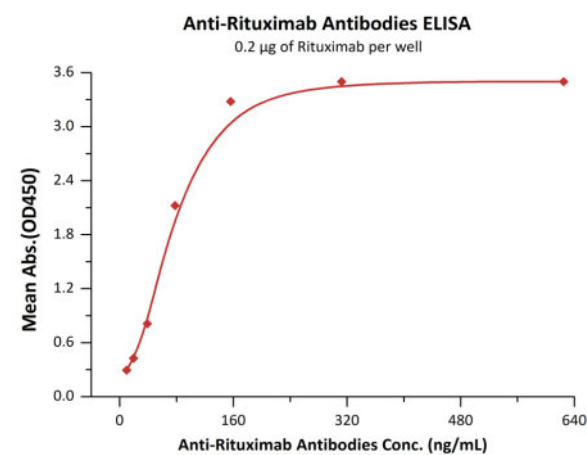
[Report](#)

Discounts, Gifts,
and more!





Immobilized Rituximab at 1 µg/mL (100 µL/well) can bind Anti-Rituximab Antibody (Cat. No. RIB-Y35c) with a linear range of 0.2-6 ng/mL (QC tested).



Immobilized Rituximab at 2 µg/mL, add increasing concentrations of Anti-Rituximab Antibody (Cat. No. RIB-Y35c) in the 10% human serum and then add Anti-CD20, Human IgG1 at 5 µg/mL. Detection was performed using HRP-conjugated streptavidin with sensitivity of 100 ng/mL (Routinely tested).

Background

Rituxan is a genetically engineered chimeric murine/human monoclonal antibody directed against the CD20 antigen found on the surface of normal and malignant B lymphocytes. The antibody is an IgG1 kappa immunoglobulin containing murine light- and heavy-chain variable region sequences and human constant region sequences. Rituximab is composed of two heavy chains of 451 amino acids and two light chains of 213 amino acids, Anti-Rituximab Antibodies (RIB-Y35c) is the monoclonal antibody of Rituximab expressed with human HEK293 cells.

Clinical and Translational Updates

Discounts, Gifts,
and more!

