



Source

Monoclonal Anti-PTX Antibody, Mouse IgG2a is a Mouse monoclonal antibody recombinantly expressed from CHO cells.

Species

Mouse

Isotype

Mouse IgG2a | Mouse Kappa

Antibody Type

Recombinant Monoclonal

Reactivity

Chemical

Immunogen

PTX.

Specificity

This product is a specific antibody specifically reacts with PTX.

Application

Application	Recommended Usage
ELISA	0.1-20 ng/mL

Purity

>95% as determined by SDS-PAGE.

>90% as determined by SEC-MALS.

Purification

Protein A purified/ Protein G purified

Formulation

Lyophilized from 0.22 µm filtered solution in PBS, pH7.4 with trehalose as protectant.

Contact us for customized product form or formulation.

Reconstitution

Please see Certificate of Analysis for specific instructions.

For best performance, we strongly recommend you to follow the reconstitution protocol provided in the CoA.

Storage

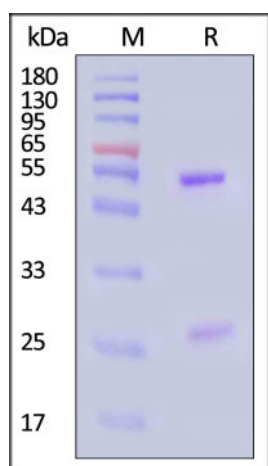
For long term storage, the product should be stored at lyophilized state at -20°C or lower.

Please avoid repeated freeze-thaw cycles.

This product is stable after storage at:

- -20°C to -70°C for 12 months in lyophilized state;
- -70°C for 3 months under sterile conditions after reconstitution.

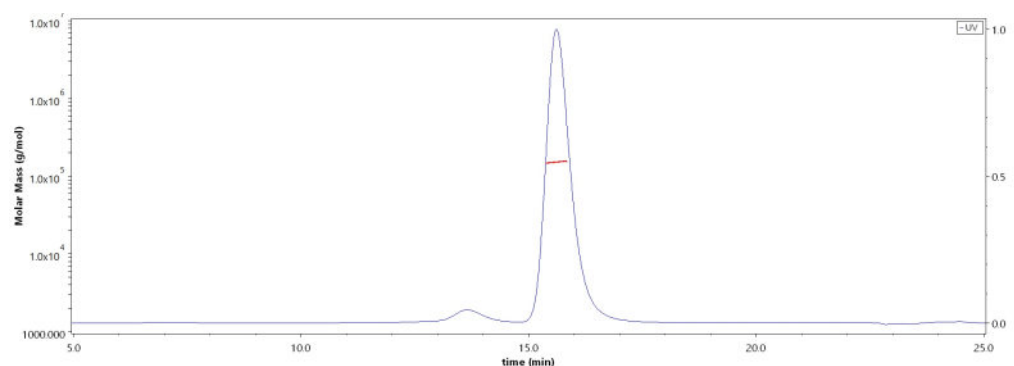
SDS-PAGE



Monoclonal Anti-PTX Antibody, Mouse IgG2a on SDS-PAGE under reducing (R) condition. The gel was stained with Coomassie Blue. The purity of the protein is greater than 95% (With [Star Ribbon Pre-stained Protein Marker](#)).

Bioactivity-ELISA

SEC-MALS



The purity of Monoclonal Anti-PTX Antibody, Mouse IgG2a (Cat. No. PTX-S343) is more than 90% and the molecular weight of this protein is around 140-160 kDa verified by SEC-MALS.

[Report](#)

Discounts, Gifts, and more!



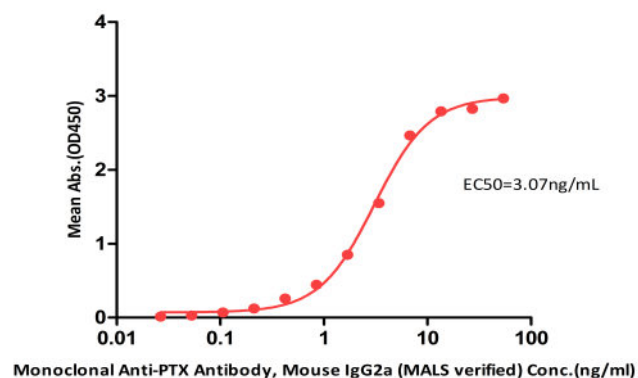
Monoclonal Anti-PTX Antibody, Mouse IgG2a (MALS verified)

Catalog # PTX-S343



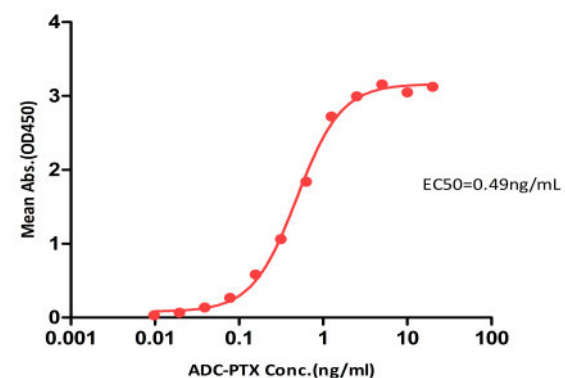
BIOSYSTEMS
Acro

Monoclonal Anti-PTX Antibody, Mouse IgG2a (MALS verified) ELISA
0.1 µg ADC-PTX per well



Immobilized ADC-PTX at 1 µg/mL (100 µL/well) can bind Monoclonal Anti-PTX Antibody, Mouse IgG2a (Cat. No. PTX-S343) with a linear range of 0.106-6.767 ng/mL (QC tested).

Monoclonal Anti-PTX Antibody, Mouse IgG2a (MALS verified) ELISA
0.2 µg of Human TROP-2 / TACSTD2 Protein, His Tag (MALS verified) per well



Immobilized Human TROP-2 / TACSTD2 Protein, His Tag (MALS verified) (Cat. No. TR2-H5223) at 2 µg/mL, add increasing concentrations of ADC-PTX, and then add Monoclonal Anti-PTX Antibody, Mouse IgG2a (Cat. No. PTX-S343) at 0.54 µg/mL. Detection was performed using HRP-conjugated Goat Anti-Mouse IgG with sensitivity of 0.04 ng/mL (Routinely tested).

Background

PTX3 is a prototypic long pentraxin consisting of a C-terminal 203-amino acid pentraxin-like domain coupled with an N-terminal 178-amino acid unrelated portion. Plays a role in the regulation of innate resistance to pathogens, inflammatory reactions, possibly clearance of self-components and female fertility. PTX3 can binds to C1q, but not C1s.

Clinical and Translational Updates

Discounts, Gifts,
and more!

