



Synonym

LRP-6,LRP6

Source

Human LRP-6 (20-630), Mouse IgG2a Fc Tag(LR6-H5253) is expressed from human 293 cells (HEK293). It contains AA Ala 20 - Pro 630 (Accession # [O75581-1](#)).

Predicted N-terminus: Ala 20

Molecular Characterization

LRP-6(Ala 20 - Pro 630) O75581-1	mFc(Glu 98 - Lys 330) P01863
-------------------------------------	---------------------------------

This protein carries a mouse IgG2a Fc tag at the C-terminus.

The protein has a calculated MW of 95.8 kDa. The protein migrates as 55 kDa and 110 kDa under reducing (R) condition (SDS-PAGE) due to glycosylation.

Endotoxin

Less than 0.1 EU per µg by the LAL method.

Purity

>90% as determined by SDS-PAGE.

Formulation

Lyophilized from 0.22 µm filtered solution in Tris with Glycine, Arginine and NaCl, pH7.5 with trehalose as protectant.

Contact us for customized product form or formulation.

Reconstitution

Please see Certificate of Analysis for specific instructions.

For best performance, we strongly recommend you to follow the reconstitution protocol provided in the CoA.

Storage

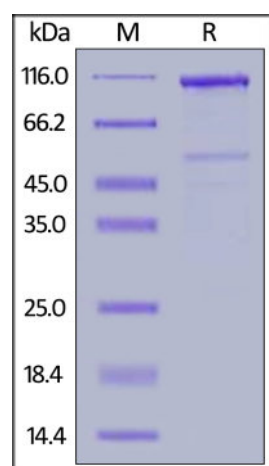
For long term storage, the product should be stored at lyophilized state at -20°C or lower.

Please avoid repeated freeze-thaw cycles.

This product is stable after storage at:

- -20°C to -70°C for 12 months in lyophilized state;
- -70°C for 3 months under sterile conditions after reconstitution.

SDS-PAGE



Human LRP-6 (20-630), Mouse IgG2a Fc Tag on SDS-PAGE under reducing (R) condition. The gel was stained with Coomassie Blue. The purity of the protein is greater than 90%.

Bioactivity-ELISA

Discounts, Gifts,
and more!

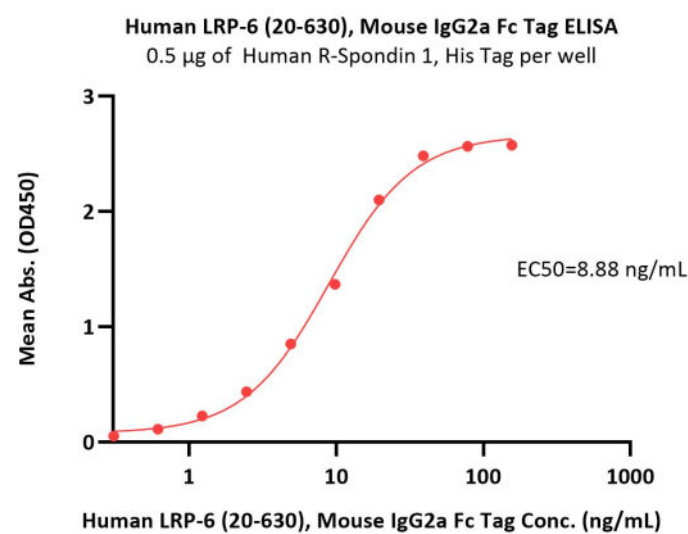
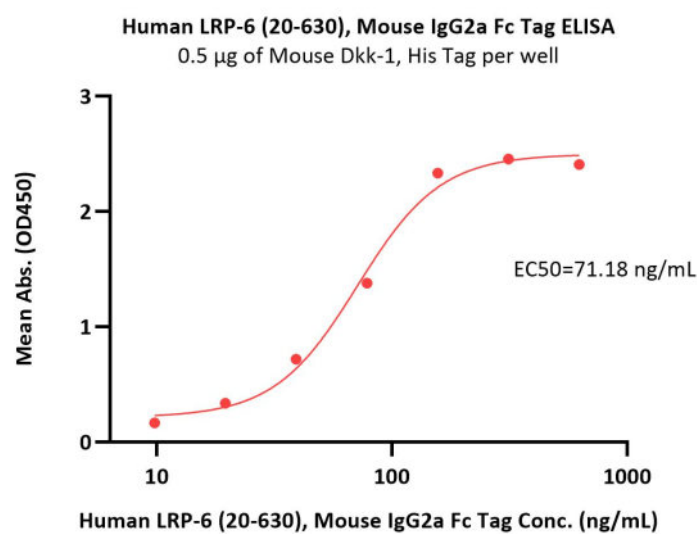


Human LRP-6 (20-630) Protein, Mouse IgG2a Fc Tag

Catalog # LR6-H5253

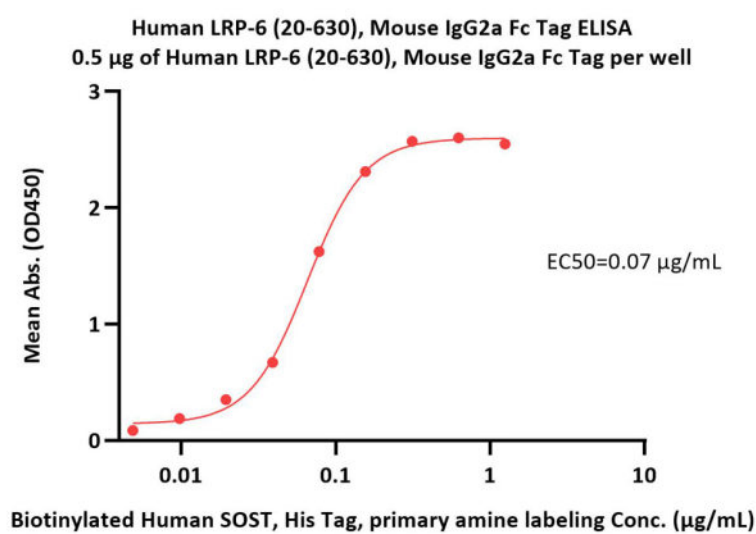


BIOSYSTEMS
Acro



Immobilized Mouse Dkk-1, His Tag (Cat. No. DK1-M52H6) at 5 µg/mL (100 µL/well) can bind Human LRP-6 (20-630), Mouse IgG2a Fc Tag (Cat. No. LR6-H5253) with a linear range of 10-78 ng/mL (QC tested).

Immobilized Human R-Spondin 1, His Tag (Cat. No. RS1-H4221) at 5 µg/mL (100 µL/well) can bind Human LRP-6 (20-630), Mouse IgG2a Fc Tag (Cat. No. LR6-H5253) with a linear range of 1-20 ng/mL (Routinely tested).



Immobilized Human LRP-6 (20-630), Mouse IgG2a Fc Tag (Cat. No. LR6-H5253) at 5 µg/mL (100 µL/well) can bind Biotinylated Human SOST, His Tag, primary amine labeling (Cat. No. SOT-H8245) with a linear range of 0.005-0.313 µg/mL (Routinely tested).

Background

LRP6 is a transmembrane low-density lipoprotein receptor that shares a similar structure with LRP5. Low-density lipoprotein receptor-related protein 6 is a key component of the LRP5/LRP6/Frizzled co-receptor group that is involved in canonical Wnt pathway. The Wnt-induced Fzd/LRP6 coreceptor complex recruits DVL1 polymers to the plasma membrane which, in turn, recruits the AXIN1/GSK3B-complex to the cell surface promoting the formation of signalsomes and inhibiting AXIN1/GSK3-mediated phosphorylation and destruction of beta-catenin.

Clinical and Translational Updates

Please contact us via TechSupport@acrobiosystems.com if you have any question on this product.

Discounts, Gifts,
and more!



www.acrobiosystems.com

12/29/2023