



### Synonym

Leucine-rich repeat-containing protein 15,LRRC15,LIB,hLib

### Source

Mouse LRRC15 Protein, Fc Tag(LR5-M5253) is expressed from human 293 cells (HEK293). It contains AA Tyr 22 - Gly 536 (Accession # [Q80X72-1](#)).

Predicted N-terminus: Tyr 22

### Molecular Characterization

LRRC15(Tyr 22 - Gly 536) Q80X72-1	Fc(Pro 100 - Lys 330) P01857
--------------------------------------	---------------------------------

This protein carries a human IgG1 Fc tag at the C-terminus.

The protein has a calculated MW of 83.9 kDa. The protein migrates as 90-95 kDa when calibrated against [Star Ribbon Pre-stained Protein Marker](#) under reducing (R) condition (SDS-PAGE) due to glycosylation.

### Endotoxin

Less than 1.0 EU per µg by the LAL method.

### Purity

>90% as determined by SDS-PAGE.

>90% as determined by SEC-MALS.

### Formulation

Lyophilized from 0.22 µm filtered solution in PBS, pH7.4 with trehalose as protectant.

Contact us for customized product form or formulation.

### Reconstitution

Please see Certificate of Analysis for specific instructions.

*For best performance, we strongly recommend you to follow the reconstitution protocol provided in the CoA.*

### Storage

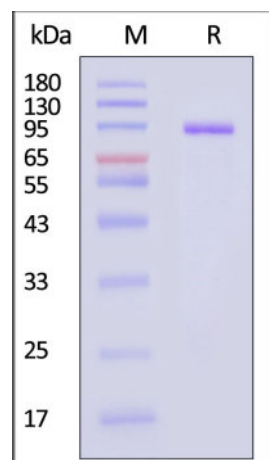
For long term storage, the product should be stored at lyophilized state at -20°C or lower.

*Please avoid repeated freeze-thaw cycles.*

This product is stable after storage at:

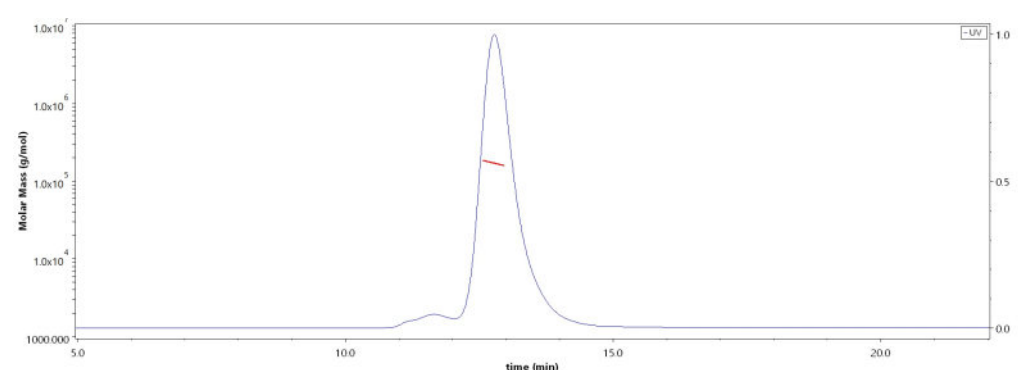
- -20°C to -70°C for 12 months in lyophilized state;
- -70°C for 3 months under sterile conditions after reconstitution.

### SDS-PAGE



Mouse LRRC15 Protein, Fc Tag on SDS-PAGE under reducing (R) condition. The gel was stained with Coomassie Blue. The purity of the protein is greater than 90% (With [Star Ribbon Pre-stained Protein Marker](#)).

### SEC-MALS



The purity of Mouse LRRC15 Protein, Fc Tag (Cat. No. LR5-M5253) is more than 90% and the molecular weight of this protein is around 160-200 kDa verified by SEC-MALS.

[Report](#)

### Background

LRRC15 (Leucine-rich repeat-containing protein 15) is also known as LIB and hLib. LRRC15 is highly expressed in a variety of solid tumors. LRRC15 was expressed on stromal fibroblasts in many solid tumors (e.g., breast, head and neck, lung, pancreatic) as well as directly on a subset of cancer cells of mesenchymal

Discounts, Gifts,  
and more!



## Mouse LRRC15 / LIB Protein, Fc Tag (MALS verified)

Catalog # LR5-M5253



BIOSYSTEMS  
**Acro**

origin (e.g., sarcoma, melanoma, glioblastoma). LRRC15 expression was induced by TGF $\beta$  on activated fibroblasts ( $\alpha$ SMA+) and on mesenchymal stem cells. These collective findings suggested LRRC15 as a novel CAF and mesenchymal marker with utility as a therapeutic target for the treatment of cancers with LRRC15-positive stromal desmoplasia or cancers of mesenchymal origin. ABBV-085 is a monomethyl auristatin E (MMAE)-containing antibody–drug conjugate (ADC) directed against LRRC15, and it demonstrated robust preclinical efficacy against LRRC15 stromal-positive/cancer-negative, and LRRC15 cancer-positive models as a monotherapy, or in combination with standard-of-care therapies.

### Clinical and Translational Updates

Discounts, Gifts,  
and more!



[www.acrobiosystems.com](http://www.acrobiosystems.com)

7/23/2024