



## Product Details

Laminin-121 is one of the  $\alpha 1$  chain containing laminins. The  $\alpha 1$  chain is detected at the 2-cell stage of the pre-implantation mouse embryo and is subsequently expressed mainly in many epithelial tissues during organogenesis. Laminin-121 showed the highest affinity to  $\alpha 6\beta 1$  and  $\alpha 7\beta 1$  integrins and furthermore, laminin-121 most effectively supported neurite outgrowth.

## Key parameter

<b>Purity (SDS PAGE)</b>	> 90%
<b>Mycoplasma Test</b>	Negative
<b>Sterility Test</b>	Negative
<b>Endotoxin Test</b>	< 0.01 EU per $\mu$ g

## Reconstitution

Please see Certificate of Analysis for specific instructions.

*For best performance, we strongly recommend you to follow the reconstitution protocol provided in the CoA.*

## Formulation

Lyophilized from 0.22  $\mu$ m filtered solution in 50 mM Tris, 100 mM Glycine, 25 mM Arginine, 150 mM NaCl, pH7.5 with trehalose as protectant.

Contact us for customized product form or formulation.

## Storage

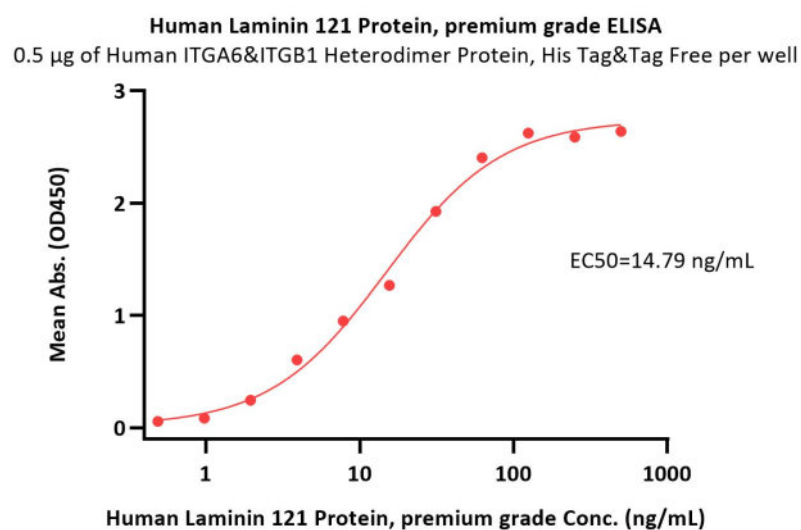
For long term storage, the product should be stored at lyophilized state at  $-20^{\circ}\text{C}$  or lower.

*Please avoid repeated freeze-thaw cycles.*

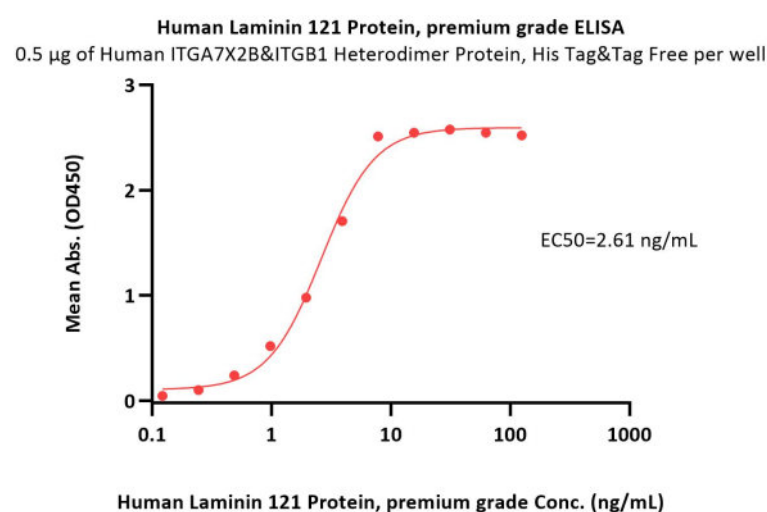
This product is stable after storage at:

- $-20^{\circ}\text{C}$  to  $-70^{\circ}\text{C}$  for 24 months in lyophilized state;
- $-70^{\circ}\text{C}$  for 12 months under sterile conditions after reconstitution;
- $2-8^{\circ}\text{C}$  for 3 months under sterile conditions after reconstitution.

## Bioactivity-ELISA



Immobilized Human ITGA6&ITGB1 Heterodimer Protein, His Tag&Tag Free (Cat. No. IT1-H52W7) at 5  $\mu$ g/mL (100  $\mu$ L/well) can bind Human Laminin



Immobilized Human ITGA7X2B&ITGB1 Heterodimer Protein, His Tag&Tag Free (Cat. No. IT1-H52W8) at 5  $\mu$ g/mL (100  $\mu$ L/well) can bind Human

Discounts, Gifts,  
and more!



## Human Laminin 121 Protein, premium grade

Catalog # LA1-H5261

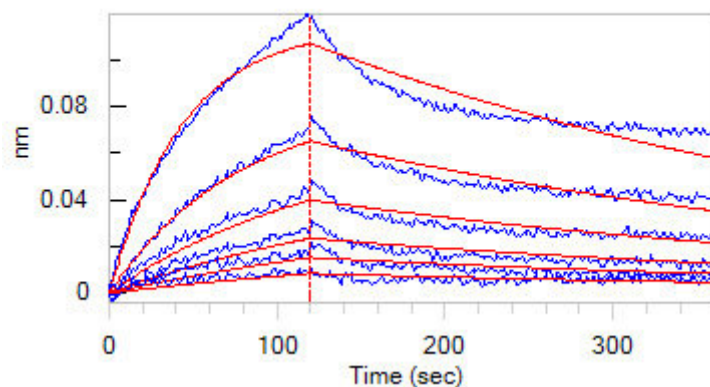


BIOSYSTEMS  
**Acro**

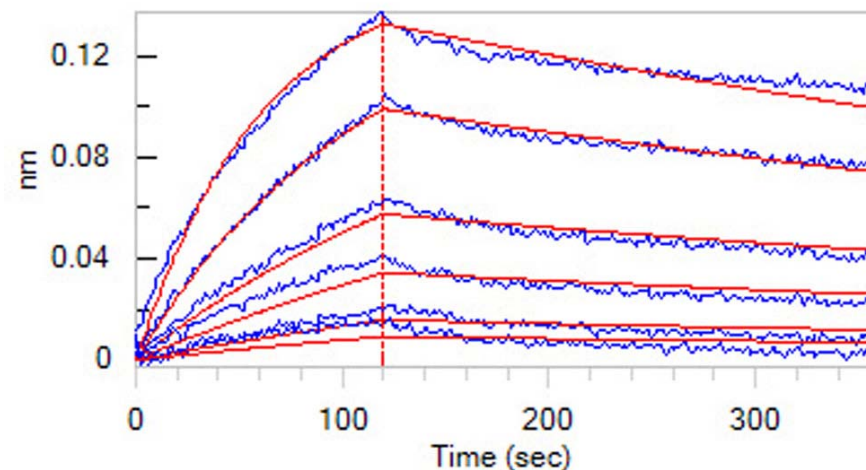
121 Protein, premium grade (Cat. No. LA1-H5261) with a linear range of 0.5-62.5 ng/mL (Routinely tested).

Laminin 121 Protein, premium grade (Cat. No. LA1-H5261) with a linear range of 0.2-8 ng/mL (Routinely tested).

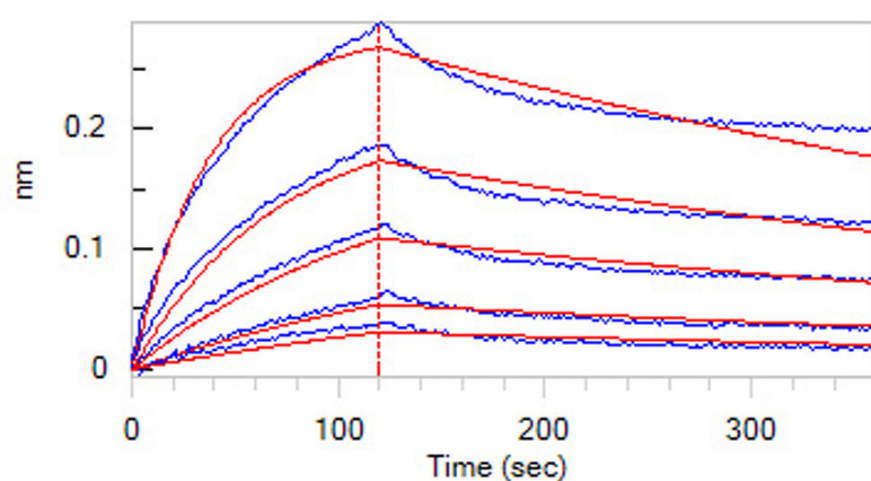
### Bioactivity-BLI



Loaded Human Laminin 121 Protein, premium grade (Cat. No. LA1-H5261) on Protein A Biosensor, can bind Human ITGA7X2B&ITGB1 Heterodimer Protein, His Tag&Tag Free (Cat. No. IT1-H52W8) with an affinity constant of 6.23 nM as determined in BLI assay (ForteBio Octet Red96e) (QC tested).



Loaded Human Laminin 121 Protein, premium grade (Cat. No. LA1-H5261) on Protein A Biosensor, can bind Human ITGA6&ITGB1 Heterodimer Protein, His Tag&Tag Free (Cat. No. IT1-H52W7) with an affinity constant of 15.7 nM as determined in BLI assay (ForteBio Octet Red96e) (Routinely tested).



Loaded Human Laminin 121 Protein, premium grade (Cat. No. LA1-H5261) on Protein A Biosensor, can bind Human ITGA7X2B&ITGB1 Heterodimer Protein, His Tag&Tag Free (Cat. No. IT1-H52W8) with an affinity constant of 6.95 nM as determined in BLI assay (ForteBio Octet Red96e) (Routinely tested).

### Clinical and Translational Updates

Discounts, Gifts,  
and more!



»» [www.acrobiosystems.com](http://www.acrobiosystems.com)

9/14/2024