

### Synonym

Interleukin-20 receptor subunit alpha,IL-20 receptor subunit alpha,IL-20R-alpha,IL-20RA,Cytokine receptor class-II member 8,Cytokine receptor family 2 member 8,CRF2-8,IL-20R1,ZcytoR7

### Source

Human IL-20 R alpha Protein, His Tag (ILA-H52H3) is expressed from human 293 cells (HEK293). It contains AA Val 30 - Lys 250 (Accession # [Q9UHF4-1](#)). Predicted N-terminus: Val 30

### Molecular Characterization

IL-20RA(Val 30 - Lys 250)  
Q9UHF4-1 Poly-his

This protein carries a polyhistidine tag at the C-terminus.

The protein has a calculated MW of 27.1 kDa. The protein migrates as 35-45 kDa under reducing (R) condition (SDS-PAGE) due to glycosylation.

### Endotoxin

Less than 1.0 EU per µg by the LAL method.

### Purity

>90% as determined by SDS-PAGE.

### Formulation

Lyophilized from 0.22 µm filtered solution in PBS, pH7.4. Normally trehalose is added as protectant before lyophilization.

Contact us for customized product form or formulation.

### Reconstitution

Please see Certificate of Analysis for specific instructions.

*For best performance, we strongly recommend you to follow the reconstitution protocol provided in the CoA.*

### Storage

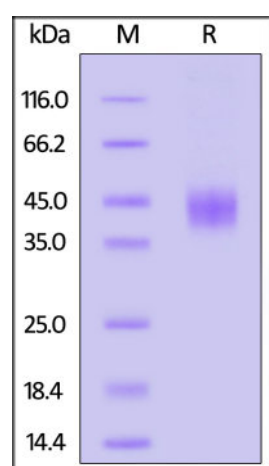
For long term storage, the product should be stored at lyophilized state at -20°C or lower.

*Please avoid repeated freeze-thaw cycles.*

This product is stable after storage at:

- -20°C to -70°C for 12 months in lyophilized state;
- -70°C for 3 months under sterile conditions after reconstitution.

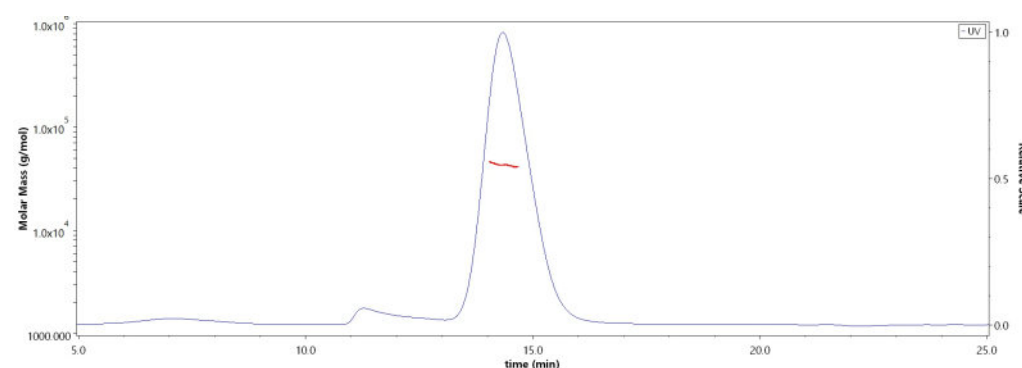
### SDS-PAGE



Human IL-20 R alpha Protein, His Tag on SDS-PAGE under reducing (R) condition. The gel was stained overnight with Coomassie Blue. The purity of the protein is greater than 90%.

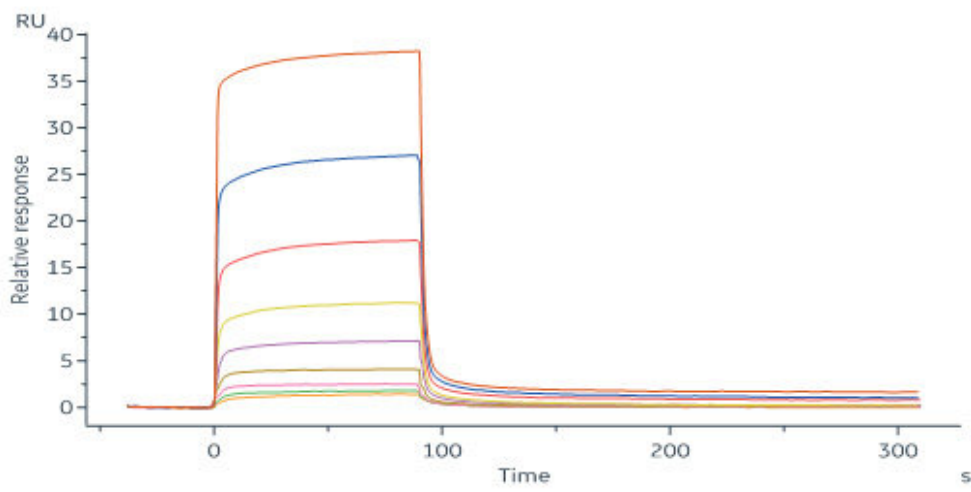
### Bioactivity-SPR

### SEC-MALS



The purity of Human IL-20 R alpha Protein, His Tag (Cat. No. ILA-H52H3) is more than 85% and the molecular weight of this protein is around 35-50 kDa verified by SEC-MALS.

[Report](#)



Human IL-20, His Tag (Cat. No. IL0-H5243) immobilized on CM5 Chip can bind Human IL-20 R alpha Protein, His Tag (Cat. No. ILA-H52H3) with an affinity constant of 3.31  $\mu$ M as determined in a SPR assay (Biacore 8K) (QC tested).

### Background

IL-20 R alpha (Interleukin-20 receptor subunit alpha) forms a functional heterodimer with the IL-20 beta subunit, and transduces ligand-binding at least in part through STAT3 activation. The IL-20 subfamily of cytokines and receptors are members of the larger IL-10 family, which are grouped together based on their utilization of common receptor subunits, similarities in their target-cell profiles, and biological functions. This subfamily consists of the cytokines, IL-19, IL-20, IL-22, IL-24, and IL-26, as well as the receptors, IL-20RA, IL-20RB, IL-10RB, and IL-22RA1.

### Clinical and Translational Updates

Please contact us via [TechSupport@acrobiosystems.com](mailto:TechSupport@acrobiosystems.com) if you have any question on this product.