



## Synonym

IL2RB,RP5-1170K4.6,CD122,P70-75

## Source

Canine IL-2 R beta, His Tag(ILA-C52H5) is expressed from human 293 cells (HEK293). It contains AA Asn 30 - Pro 246 (Accession # [NP\\_001273780.1](#)).

## Molecular Characterization

IL-2 R beta(Asn 30 - Pro 246)  
NP\_001273780.1 Poly-his

This protein carries a polyhistidine tag at the C-terminus.

The protein has a calculated MW of 27.0 kDa. The protein migrates as 35-40 kDa under reducing (R) condition (SDS-PAGE) due to glycosylation.

## Endotoxin

Less than 1.0 EU per µg by the LAL method / rFC method.

## Purity

>95% as determined by SDS-PAGE.

## Formulation

Lyophilized from 0.22 µm filtered solution in PBS, pH7.4 with trehalose as protectant.

Contact us for customized product form or formulation.

## Reconstitution

Please see Certificate of Analysis for specific instructions.

*For best performance, we strongly recommend you to follow the reconstitution protocol provided in the CoA.*

## Storage

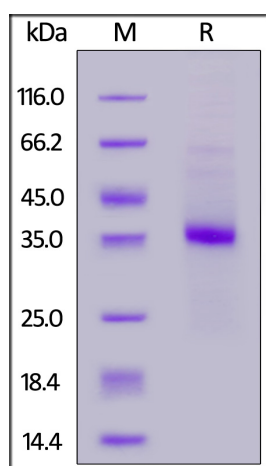
For long term storage, the product should be stored at lyophilized state at -20°C or lower.

*Please avoid repeated freeze-thaw cycles.*

This product is stable after storage at:

- -20°C to -70°C for 12 months in lyophilized state;
- -70°C for 3 months under sterile conditions after reconstitution.

## SDS-PAGE



Canine IL-2 R beta, His Tag on SDS-PAGE under reducing (R) condition. The gel was stained with Coomassie Blue. The purity of the protein is greater than 95%.

## Background

Interleukin-2 receptor (IL-2R) is a heterotrimeric protein expressed on the surface of certain immune cells, such as lymphocytes, that binds and responds to a cytokine called IL-2. The IL-2R is made up of 3 subunits -  $\alpha$  (CD25),  $\beta$  (CD122) and  $\gamma$  (CD132) - non-covalently associating. The  $\alpha$  and  $\beta$  chains are involved in binding IL-2, while signal transduction following cytokine interaction is carried out by the  $\gamma$ -chain, along with the  $\beta$  subunit.

Discounts, Gifts,  
and more!



## Canine IL-2 R beta Protein, His Tag

Catalog # ILA-C52H5



BIOSYSTEMS  
**Acro**

CD122 is also known as IL2R beta, is a member of the type I cytokine receptor family. CD122 is the receptor for interleukin-2 and is involved in receptor mediated endocytosis and transduces the mitogenic signals of IL2.

Discounts, Gifts,  
and more!



[www.acrobiosystems.com](http://www.acrobiosystems.com)

4/21/2025