



Synonym

HLA-A*2402 & B2M & WT-1 (CYTWNQMNL)

Source

Biotinylated Human HLA-A*24:02&B2M&WT-1 (CYTWNQMNL) Complex Protein(HLW-H82E6) is expressed from human 293 cells (HEK293). It contains AA Gly 25 - Thr 305 (HLA-A*24:02) & Ile 21 - Met 119 (B2M) & CYTWNQMNL peptide (Accession # [AAA59600.1](#) (HLA-A*24:02) & [P61769](#) (B2M) & CYTWNQMNL).

Predicted N-terminus: Gly 25 & Ile 21

Molecular Characterization

Biotinylated Human HLA-A*24:02&B2M&WT-1 (CYTWNQMNL) Complex Protein is produced by co-expression of HLA and B2M loaded with WT-1 peptide.

This protein carries a polyhistidine tag at the C-terminus, followed by an Avi tag (Avitag™).

The protein has a calculated MW of 35.8 kDa and 11.7 kDa. The protein migrates as 39-41 kDa and 10 kDa when calibrated against [Star Ribbon Pre-stained Protein Marker](#) under reducing (R) condition (SDS-PAGE) due to glycosylation.

Labeling

Biotinylation of this product is performed using Avitag™ technology. Briefly, the single lysine residue in the Avitag is enzymatically labeled with biotin.

Protein Ratio

Passed as determined by the HABA assay / binding ELISA.

Endotoxin

Less than 1.0 EU per µg by the LAL method.

Purity

>90% as determined by SDS-PAGE.

>90% as determined by SEC-MALS.

Formulation

Supplied as 0.2 µm filtered solution in PBS, pH7.4 with trehalose as protectant.

Contact us for customized product form or formulation.

Shipping

This product is supplied and shipped with dry ice, please inquire the shipping cost.

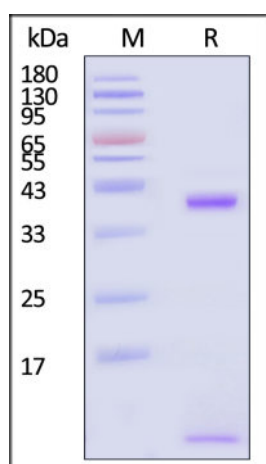
Storage

Please avoid repeated freeze-thaw cycles.

This product is stable after storage at:

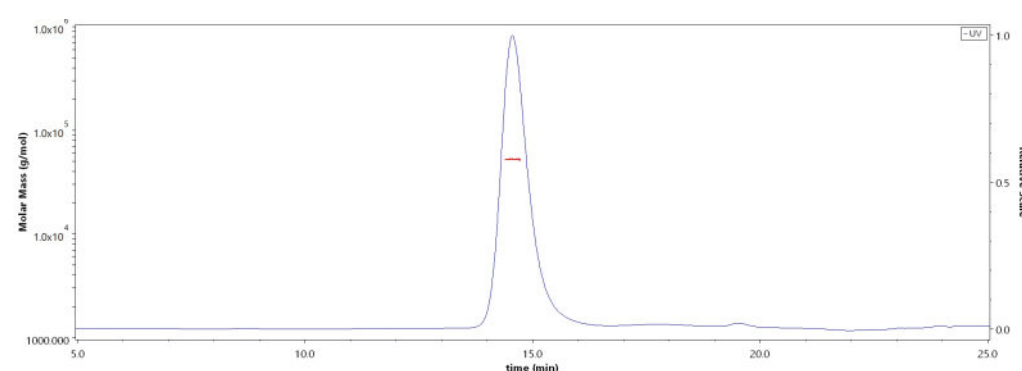
- The product MUST be stored at -70°C or lower upon receipt;
- -70°C for 3 months under sterile conditions.

SDS-PAGE



Biotinylated Human HLA-A*24:02&B2M&WT-1 (CYTWNQMNL) Complex Protein on SDS-PAGE under reducing (R) condition. The gel was stained with

SEC-MALS



The purity of Biotinylated Human HLA-A*24:02&B2M&WT-1 (CYTWNQMNL) Complex Protein (Cat. No. HLW-H82E6) is more than 90%

Discounts, Gifts,
and more!



Biotinylated Human HLA-A*24:02&B2M&WT-1 (CYTWNQMNL) Complex Protein (Monomer, MALS verified)



BIOSYSTEMS
Acro

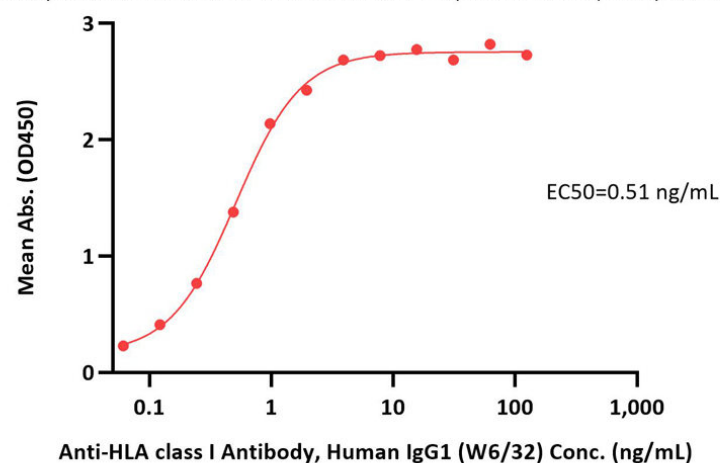
Catalog # HLW-H82E6

Coomassie Blue. The purity of the protein is greater than 90% (With [Star Ribbon Pre-stained Protein Marker](#)).

and the molecular weight of this protein is around 45-60 kDa verified by SEC-MALS.
[Report](#)

Bioactivity-ELISA

Biotinylated Human HLA-A*24:02&B2M&WT-1 (CYTWNQMNL) Complex Protein ELISA
0.1 µg of Biotinylated Human HLA-A*24:02&B2M&WT-1 (CYTWNQMNL) Complex Protein per well



Immobilized Biotinylated Human HLA-A*24:02&B2M&WT-1 (CYTWNQMNL) Complex Protein (Cat. No. HLW-H82E6) at 1 µg/mL (100 µL/well) on streptavidin (Cat. No. STN-N5116) precoated (0.5 µg/well) plate can bind Anti-HLA class I Antibody, Human IgG1 (W6/32) with a linear range of 0.1-1 ng/mL (QC tested).

Background

Wilms tumor gene 1 (WT1), is an attractive target antigen for leukemia and solid cancer. WT1-specific adoptive immunotherapy has developed for tumor treatment in recent years. WT1 has been proved widely expressed in breast, colon and ovarian cancer. It participates in cell growth, differentiation and apoptosis regulation. The human HLA-A*2402 WT-1 (CYTWNQMNL) complex protein is a complex of HLA-A*2402 of the MHC Class I, B2M and CYTWNQMNL peptide of the WT-1.

Clinical and Translational Updates

Please contact us via TechSupport@acrobiosystems.com if you have any question on this product.

Discounts, Gifts,
and more!



www.acrobiosystems.com

12/29/2023