

Source

Biotinylated Human HLA-A*02:01&B2M&RHAMM-R3 (ILSLELMKL) Complex Protein(HLR-H82E6) is expressed from human 293 cells (HEK293). It contains AA Gly 25 - Ile 308 (HLA-A*02:01) & Ile 21 - Met 119 (B2M) & ILSLELMKL peptide (Accession # [AAA59606.1](#) (HLA-A*02:01) & [P61769-1](#) (B2M) & ILSLELMKL).

Predicted N-terminus: Gly 25 & Ile 21

Molecular Characterization

Biotinylated Human HLA-A*02:01&B2M&RHAMM-R3 (ILSLELMKL) Complex Protein is produced by co-expression of HLA and B2M loaded with RHAMM-R3 peptide.

This protein carries a polyhistidine tag at the C-terminus, followed by an Avi tag (Avitag™).

The protein has a calculated MW of 36.3 kDa and 11.7 kDa. The protein migrates as 40-44 kDa and 13 kDa under reducing (R) condition (SDS-PAGE) due to glycosylation.

Labeling

Biotinylation of this product is performed using Avitag™ technology. Briefly, the single lysine residue in the Avitag is enzymatically labeled with biotin.

Protein Ratio

Passed as determined by the HABA assay / binding ELISA.

Endotoxin

Less than 1.0 EU per µg by the LAL method.

Purity

>90% as determined by SDS-PAGE.

>90% as determined by SEC-MALS.

Formulation

Supplied as 0.2 µm filtered solution in PBS, pH7.4 with trehalose as protectant.

Contact us for customized product form or formulation.

Shipping

This product is supplied and shipped as sterile liquid solution with dry ice, please inquire the shipping cost.

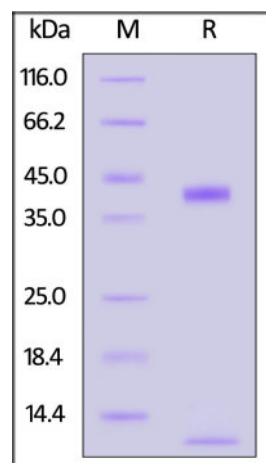
Storage

Please avoid repeated freeze-thaw cycles.

This product is stable after storage at:

- The product MUST be stored at -70°C or lower upon receipt;
- -70°C for 3 months under sterile conditions.

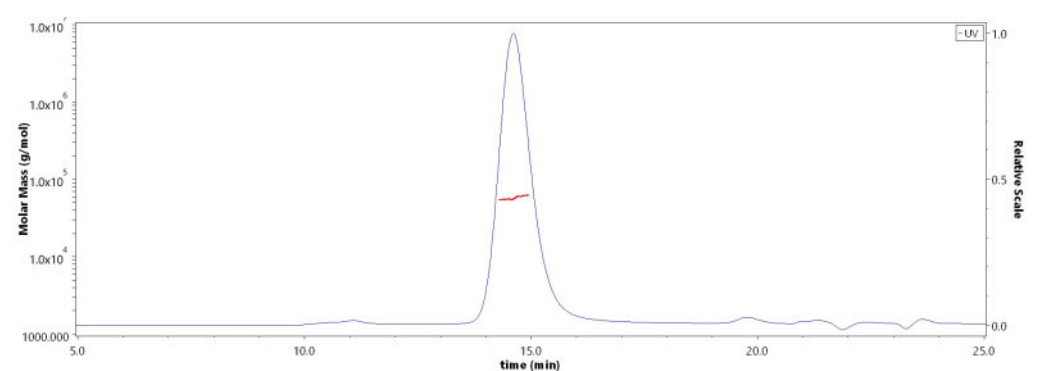
SDS-PAGE



Biotinylated Human HLA-A*02:01&B2M&RHAMM-R3 (ILSLELMKL) Complex Protein on SDS-PAGE under reducing (R) condition. The gel was stained with Coomassie Blue. The purity of the protein is greater than 90%.

Bioactivity-ELISA

SEC-MALS



The purity of Biotinylated Human HLA-A*02:01&B2M&RHAMM-R3 (ILSLELMKL) Complex Protein (Cat. No. HLR-H82E6) is more than 90% and the molecular weight of this protein is around 50-65 kDa verified by SEC-MALS.

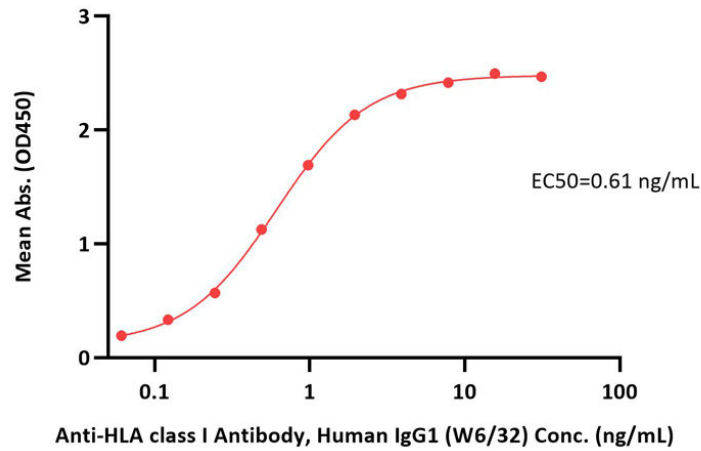
[Report](#)

Biotinylated Human HLA-A*02:01&B2M&RHAMM-R3 (ILSLELMKL) Complex Protein (Monomer, MALS verified)

Cat. No. HLR-H82E6

Biotinylated Human HLA-A*02:01&B2M&RHAMM-R3 (ILSLELMKL) Complex Protein ELISA

0.1 µg of Biotinylated Human HLA-A*02:01&B2M&RHAMM-R3 (ILSLELMKL) Complex Protein per well



Immobilized Biotinylated Human HLA-A*02:01&B2M&RHAMM-R3 (ILSLELMKL) Complex Protein (Cat. No. HLR-H82E6) at 1 µg/mL (100 µL/well) on streptavidin (Cat. No. STN-N5116) precoated (0.5 µg/well) plate can bind Anti-HLA class I Antibody, Human IgG1 (W6/32) with a linear range of 0.1-2 ng/mL (QC tested).

Background

The protein encoded by this gene is involved in cell motility. It is expressed in breast tissue and together with other proteins, it forms a complex with BRCA1 and BRCA2, thus is potentially associated with a higher risk of breast cancer. Alternatively, spliced transcript variants encoding different isoforms have been noted for this gene. The Human HLA-A*0201 RHAMM-R3 (ILSLELMKL) complex protein is a complex of HLA-A*0201 of the MHC Class I, B2M, and ILSLELMKL peptide of the RHAMM-R3.

Clinical and Translational Updates

Please contact us via TechSupport@acrobiosystems.com if you have any question on this product.