

Synonym

GDF15,GDF-15,MIC-1,MIC1,NAG-1,PDF,PLAB,PTGFB,NRG-1

Source

Human GDF-15, Fc Tag(GD5-H5269) is expressed from human 293 cells (HEK293). It contains AA Ala 197 - Ile 308 (Accession # [Q99988-1](#)).

Predicted N-terminus: Pro

Molecular Characterization

Fc(Pro 100 - Lys 330) P01857	GDF-15(Ala 197 - Ile 308) Q99988-1
---------------------------------	---------------------------------------

This protein carries a human IgG1 Fc tag at the N-terminus

The protein has a calculated MW of 38.8 kDa. The protein migrates as 45-55 kDa under reducing (R) condition, and 70-90 kDa under non-reducing (NR) condition (SDS-PAGE) due to glycosylation.

Endotoxin

Less than 1.0 EU per µg by the LAL method.

Purity

>95% as determined by SDS-PAGE.

>90% as determined by SEC-MALS.

Formulation

Lyophilized from 0.22 µm filtered solution in PBS, pH7.4 with trehalose as protectant.

Contact us for customized product form or formulation.

Reconstitution

Please see Certificate of Analysis for specific instructions.

For best performance, we strongly recommend you to follow the reconstitution protocol provided in the CoA.

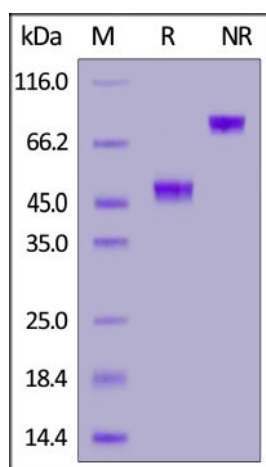
Storage

For long term storage, the product should be stored at lyophilized state at -20°C or lower.

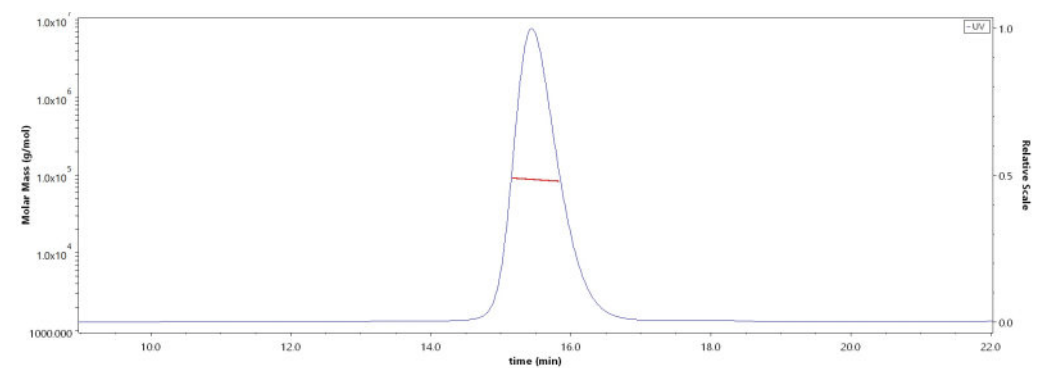
Please avoid repeated freeze-thaw cycles.

This product is stable after storage at:

- -20°C to -70°C for 12 months in lyophilized state;
- -70°C for 3 months under sterile conditions after reconstitution.

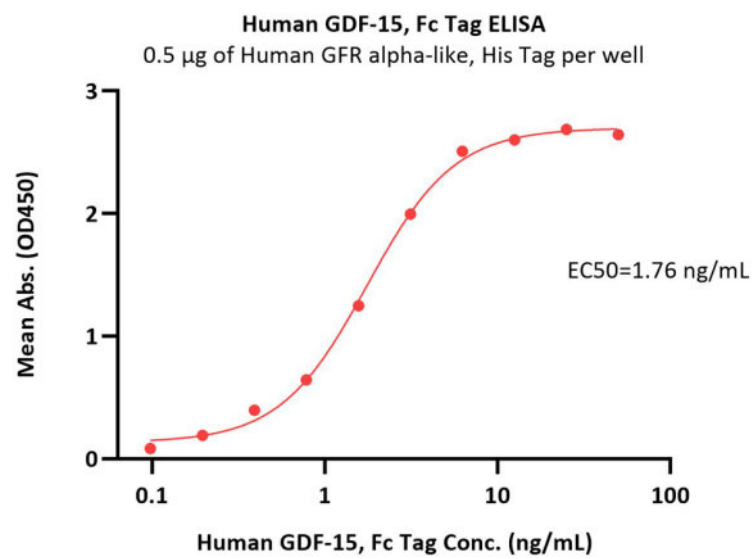
SDS-PAGE

Human GDF-15, Fc Tag on SDS-PAGE under reducing (R) and non-reducing (NR) conditions. The gel was stained with Coomassie Blue. The purity of the protein is greater than 95%.

Bioactivity-ELISA**SEC-MALS**

The purity of Human GDF-15, Fc Tag (Cat. No. GD5-H5269) is more than 90% and the molecular weight of this protein is around 74-100 kDa verified by SEC-MALS.

[Report](#)



Immobilized Human GFR alpha-like, His Tag (Cat. No. GFA-H52H3) at 5 µg/mL (100 µL/well) can bind Human GDF-15, Fc Tag (Cat. No. GD5-H5269) with a linear range of 0.1-6 ng/mL (QC tested).

Background

Growth Differentiation Factor 15 (GDF-15), also called Macrophage Inhibitory Cytokine 1 (MIC-1). Expression of MIC-1 mRNA in monocytoic cells is up-regulated by a variety of stimuli associated with activation, including interleukin 1 β , tumor necrosis factor α (TNF- α), interleukin 2, and macrophage colony-stimulating factor but not interferon γ , or lipopolysaccharide (LPS). It is highly expressed in cardiomyocytes, adipocytes, macrophages, endothelial cells, and vascular smooth muscle cells in normal and pathological condition. GDF-15 increases during tissue injury and inflammatory states and is associated with cardiometabolic risk. Increased GDF-15 levels are associated with cardiovascular diseases such as hypertrophy, heart failure, atherosclerosis, endothelial dysfunction, obesity, insulin resistance, diabetes, and chronic kidney diseases in diabetes. Increased GDF-15 level is linked with the progression and prognosis of the disease condition.

Clinical and Translational Updates

Please contact us via TechSupport@acrobiosystems.com if you have any question on this product.