

Human Clec4a Protein, Fc Tag (MALS verified)

Catalog # CLA-H5253



BIOSYSTEMS
Acro

Synonym

CD367, CLECSF6, DCIR, DDB27, HDCGC13P, LLIR, hDCIR

Source

Human Clec4a Protein, Fc Tag(CLA-H5253) is expressed from human 293 cells (HEK293). It contains AA Gln 70 - Leu 237 (Accession # [Q9UMR7-1](#)).

Molecular Characterization

| | |
|--------------------------------------|---------------------------------|
| Clec4a(Gln 70 - Leu 237) Q9UMR7-1 | Fc(Pro 100 - Lys 330) P01857 |
|--------------------------------------|---------------------------------|

This protein carries a human IgG1 Fc tag at the C-terminus.

The protein has a calculated MW of 46.4 kDa. The protein migrates as 50-55 kDa when calibrated against [Star Ribbon Pre-stained Protein Marker](#) under reducing (R) condition (SDS-PAGE) due to glycosylation.

Endotoxin

Less than 1.0 EU per µg by the LAL method.

Purity

>95% as determined by SDS-PAGE.

Formulation

Lyophilized from 0.22 µm filtered solution in PBS, pH7.4 with trehalose as protectant.

Contact us for customized product form or formulation.

Reconstitution

Please see Certificate of Analysis for specific instructions.

For best performance, we strongly recommend you to follow the reconstitution protocol provided in the CoA.

Storage

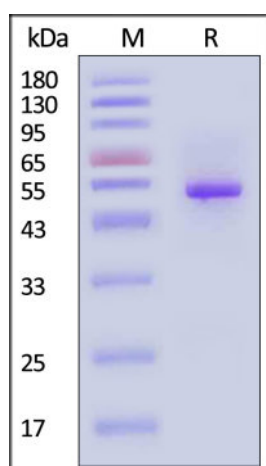
For long term storage, the product should be stored at lyophilized state at -20°C or lower.

Please avoid repeated freeze-thaw cycles.

This product is stable after storage at:

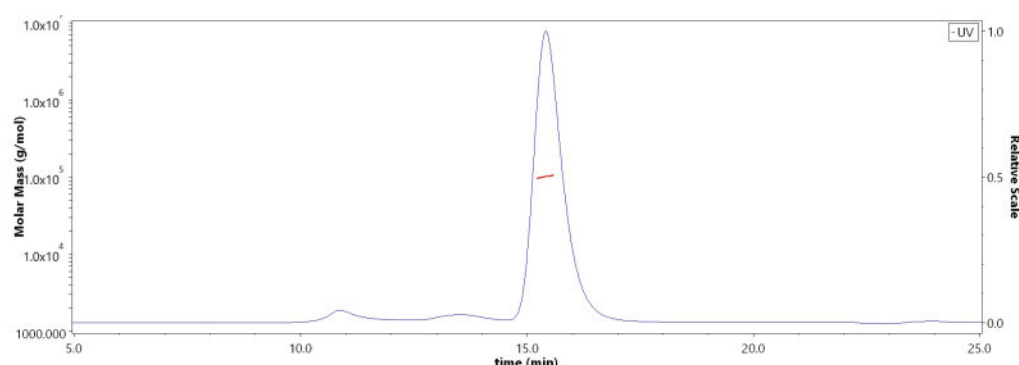
- -20°C to -70°C for 12 months in lyophilized state;
- -70°C for 3 months under sterile conditions after reconstitution.

SDS-PAGE



Human Clec4a Protein, Fc Tag on SDS-PAGE under reducing (R) condition. The gel was stained with Coomassie Blue. The purity of the protein is greater than 95% (With [Star Ribbon Pre-stained Protein Marker](#)).

SEC-MALS



The purity of Human Clec4a Protein, Fc Tag (Cat. No. CLA-H5253) is more than 85% and the molecular weight of this protein is around 90-110 kDa verified by SEC-MALS.

[Report](#)

Background

This gene encodes a member of the C-type lectin/C-type lectin-like domain (CTL/CTLD) superfamily. Members of this family share a common protein fold and have diverse functions, such as cell adhesion, cell-cell signalling, glycoprotein turnover, and roles in inflammation and immune response. The encoded type 2

Discounts, Gifts,
and more!



Human Clec4a Protein, Fc Tag (MALS verified)

Catalog # CLA-H5253



BIOSYSTEMS
Acro

transmembrane protein may play a role in inflammatory and immune response. Multiple transcript variants encoding distinct isoforms have been identified for this gene. This gene is closely linked to other CTL/CTLD superfamily members on chromosome 12p13 in the natural killer gene complex region.

Clinical and Translational Updates

Please contact us via TechSupport@acrobiosystems.com if you have any question on this product.

Discounts, Gifts,
and more!



➤ www.acrobiosystems.com

12/20/2023