



**Source**

Monoclonal Anti-Human CD28 Antibody, Mouse IgG1 is a monoclonal antibody recombinantly expressed from human 293 cells (HEK293), which provides higher batch consistency and long term security of supply.

**Application**

Flow Cytometry (Evaluation of the expression of CD28 on Human cells).

**Species**

Mouse

**Isotype**

Mouse IgG1 | Mouse Kappa

**Specificity**

This product is a specific antibody specifically reacts with CD28 protein.

**Reactivity**

Human

**Immunogen**

Purified Human CD28 Protein.

**Conjugate**

PE

Excitation Wavelength: 488 nm / 561 nm

Emission Wavelength: 575 nm

**Isotype Control**

The Isotype control is sold separately and you can search for Cat. No. [DNP-PMI](#) for product information.

**Recommended Dilution**

1:50

**Formulation**

Lyophilized from 0.22 µm filtered solution in PBS, 0.2% BSA, 0.03% Proclin 300, pH7.4 with trehalose as protectant.

Contact us for customized product form or formulation.

**Reconstitution**

Please see Certificate of Analysis for specific instructions.

*For best performance, we strongly recommend you to follow the reconstitution protocol provided in the CoA.*

**Storage**

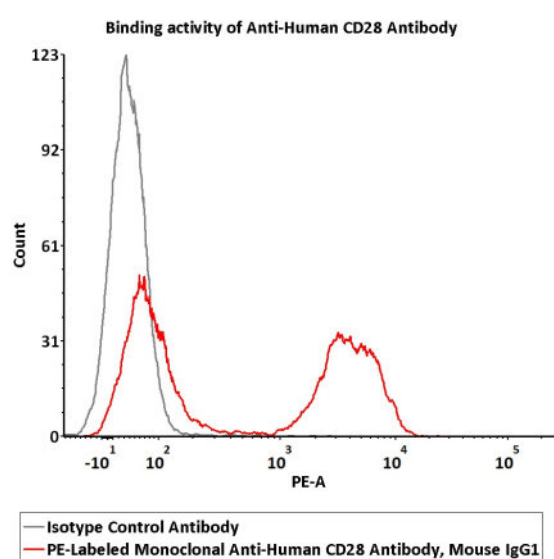
For long term storage, the product should be stored at lyophilized state at -20°C or lower.

*Please protect from light and avoid repeated freeze-thaw cycles.*

This product is stable after storage at:

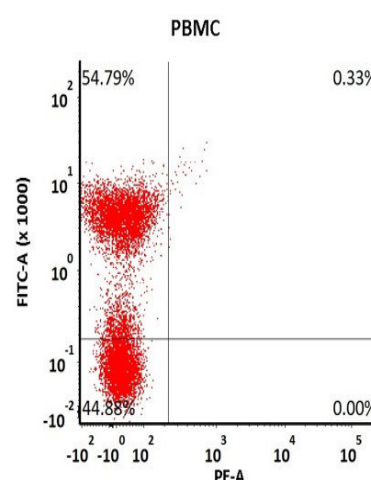
- -20°C to -70°C for 12 months in lyophilized state;
- -70°C for 12 months after reconstitution.
- 2-8 °C for 12 month after reconstitution.

**Bioactivity-FACS**

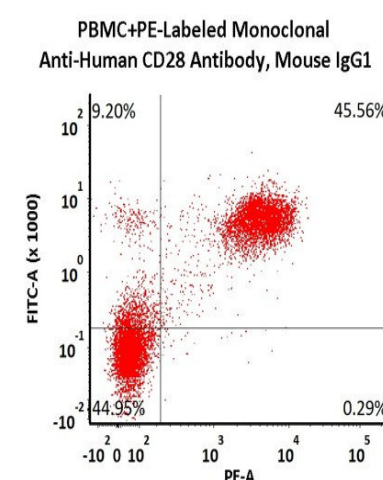


Flow cytometric analysis of Human peripheral blood lymphocytes respectively staining with PE-Labeled Monoclonal Anti-Human CD28 Antibody, Mouse IgG1 (Cat. No. CD8-PCFC1) at 1:50 dilution (2 µL of the antibody stock

A



B



Non-specificity of PE-Labeled Monoclonal Anti-Human CD28 Antibody, Mouse IgG1 (Cat. No. CD8-PCFC1) binding to CD3- cells present in human PBMC. Human PBMCs were simultaneously stained with FITC anti-human

Discounts, Gifts,  
and more!



## PE-Labeled Monoclonal Anti-Human CD28 Antibody, Mouse IgG1 (0.03% Proclin)

Catalog # CD8-PCFC1



BIOSYSTEMS  
**Acro**

solution corresponds to labeling of  $1 \times 10^6$  cells in a final volume of 100  $\mu\text{L}$ ), compared with isotype control antibody. PE signal was used to evaluate the binding activity (QC tested).

CD3 Antibody and PE-Labeled Monoclonal Anti-Human CD28 Antibody, Mouse IgG1 (2  $\mu\text{L}$  of the antibody stock solution corresponds to labeling of  $5 \times 10^5$  cells in a final volume of 100  $\mu\text{L}$ ), washed and then analyzed with FACS. FITC negative signals and PE positive signals were used to evaluate the non-specific binding activity to human CD3<sup>+</sup> cells (Routinely tested).

### Background

T-cell-specific surface glycoprotein CD28 is also known as TP44, is a single-pass type I membrane protein which contains one Ig-like V-type (immunoglobulin-like) domain. is one of the molecules expressed on T cells that provide co-stimulatory signals, which are required for T cell activation. CD28 is the receptor for CD80 (B7.1) and CD86 (B7.2). When activated by Toll-like receptor ligands, the CD80 expression is upregulated in antigen presenting cells (APCs). The CD86 expression on antigen presenting cells is constitutive. CD28 is the only B7 receptor constitutively expressed on naive T cells.

### Clinical and Translational Updates

Discounts, Gifts,  
and more!



[www.acrobiosystems.com](http://www.acrobiosystems.com)

9/18/2024