



Synonym

CD33,SIGLEC3,gp67

Source

Cynomolgus Siglec-3, His Tag(CD3-C52H4) is expressed from human 293 cells (HEK293). It contains AA Met 16 - Leu 228 (Accession # [XP_045235686.1](#)).

Predicted N-terminus: Met 16

Molecular Characterization

Siglec-3(Met 16 - Leu 228)
XP_045235686.1 Poly-his

This protein carries a polyhistidine tag at the C-terminus.

The protein has a calculated MW of 25.7 kDa. The protein migrates as 38-43 kDa when calibrated against [Star Ribbon Pre-stained Protein Marker](#) under reducing (R) condition (SDS-PAGE) due to glycosylation.

Endotoxin

Less than 1.0 EU per µg by the LAL method / rFC method.

Purity

>90% as determined by SDS-PAGE.

Formulation

Lyophilized from 0.22 µm filtered solution in PBS, pH7.4 with trehalose as protectant.

Contact us for customized product form or formulation.

Reconstitution

Please see Certificate of Analysis for specific instructions.

For best performance, we strongly recommend you to follow the reconstitution protocol provided in the CoA.

Storage

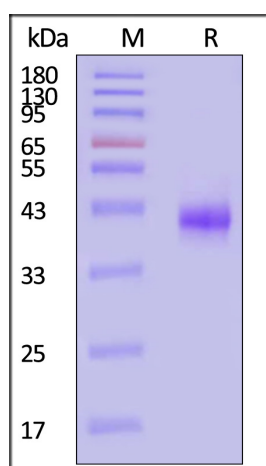
For long term storage, the product should be stored at lyophilized state at -20°C or lower.

Please avoid repeated freeze-thaw cycles.

This product is stable after storage at:

- -20°C to -70°C for 12 months in lyophilized state;
- -70°C for 3 months under sterile conditions after reconstitution.

SDS-PAGE



Cynomolgus Siglec-3, His Tag on SDS-PAGE under reducing (R) condition.

The gel was stained with Coomassie Blue. The purity of the protein is greater than 90% (With [Star Ribbon Pre-stained Protein Marker](#)).

Background

Myeloid cell surface antigen CD33 is also known as SIGLEC3, Siglecs (sialic acid binding Iglike lectins) and GP67, is a single-pass type I membrane protein which belongs to the immunoglobulin superfamily and SIGLEC (sialic acid binding Ig-like lectin) family. Human CD33 / Siglec-3 cD encodes a 364 amino acid (aa) polypeptide with a hydrophobic signal peptide, an N-terminal Ig-like V-type domain, one Ig-like C2-type domains, a transmembrane region and a cytoplasmic tail.

CD33 / Siglec-3 usually considered myeloid-specific, but it can also be found on some lymphoid cells. In the immune response, CD33 / Siglec-3 may act as an

Discounts, Gifts,
and more!



Cynomolgus Siglec-3 / CD33 Protein, His Tag

Catalog # CD3-C52H4



BIOSYSTEMS
Acro

inhibitory receptor upon ligand induced tyrosine phosphorylation by recruiting cytoplasmic phosphatase(s) via their SH2 domain(s) that block signal transduction through dephosphorylation of signaling molecules. CD33 / Siglec-3 induces apoptosis in acute myeloid leukemia.

Discounts, Gifts,
and more!



➤ www.acrobiosystems.com

4/21/2025