

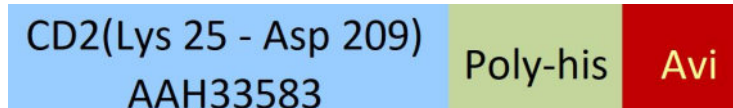
**Synonym**

CD2,SRBC,LFA-2,T11

Source

Biotinylated Human CD2, His,Avitag(CD2-H82E6) is expressed from human 293 cells (HEK293). It contains AA Lys 25 - Asp 209 (Accession # [AAH33583](#)).

Predicted N-terminus: Lys 25

Molecular Characterization

This protein carries a polyhistidine tag at the C-terminus, followed by an Avi tag (Avitag™).

The protein has a calculated MW of 24.8 kDa. The protein migrates as 35-43 kDa under reducing (R) condition (SDS-PAGE) due to glycosylation.

Labeling

Biotinylation of this product is performed using Avitag™ technology. Briefly, the single lysine residue in the Avitag is enzymatically labeled with biotin.

Protein Ratio

Passed as determined by the HABA assay / binding ELISA.

Endotoxin

Less than 1.0 EU per µg by the LAL method.

Purity

>95% as determined by SDS-PAGE.

Formulation

Lyophilized from 0.22 µm filtered solution in PBS, pH7.4 with trehalose as protectant.

Contact us for customized product form or formulation.

Reconstitution

Please see Certificate of Analysis for specific instructions.

For best performance, we strongly recommend you to follow the reconstitution protocol provided in the CoA.

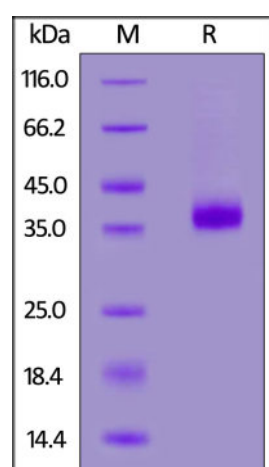
Storage

For long term storage, the product should be stored at lyophilized state at -20°C or lower.

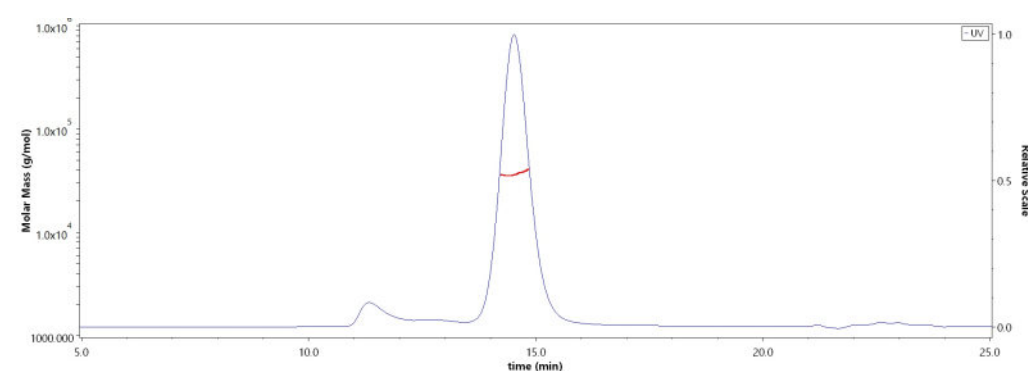
Please avoid repeated freeze-thaw cycles.

This product is stable after storage at:

- -20°C to -70°C for 12 months in lyophilized state;
- -70°C for 3 months under sterile conditions after reconstitution.

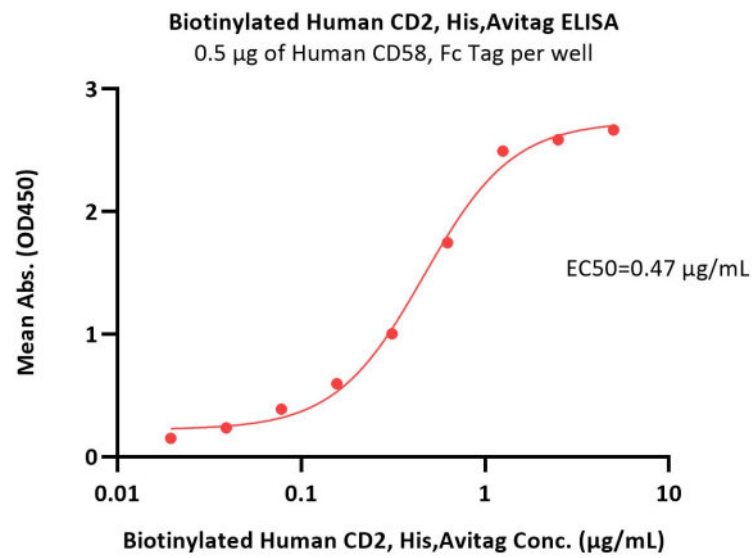
SDS-PAGE

Biotinylated Human CD2, His,Avitag on SDS-PAGE under reducing (R) condition. The gel was stained with Coomassie Blue. The purity of the protein is greater than 95%.

Bioactivity-ELISA**SEC-MALS**

The purity of Biotinylated Human CD2, His,Avitag (Cat. No. CD2-H82E6) is more than 85% and the molecular weight of this protein is around 30-40 kDa verified by SEC-MALS.

[Report](#)**Discounts, Gifts,
and more!**



Immobilized Human CD58, Fc Tag (Cat. No. LF3-H5256) at 5 µg/mL (100 µL/well) can bind Biotinylated Human CD2, His,Avitag (Cat. No. CD2-H82E6) with a linear range of 0.02-1.25 µg/mL (QC tested).

Background

T-cell surface antigen CD2 is also known as Erythrocyte receptor, LFA-2, LFA-3 receptor, Rosette receptor, T-cell surface antigen T11/Leu-5 and SRBC, is a single-pass type I membrane protein found on the surface of T cells and natural killer (NK) cells. CD2 is a member of the immunoglobulin superfamily. CD2 / SRBC contains 1 Ig-like C2-type (immunoglobulin-like) domain and 1 Ig-like V-type (immunoglobulin-like) domain. CD2 / SRBC interacts with other adhesion molecules, such as lymphocyte function-associated antigen-3 (LFA-3 / CD58) in humans, or CD48 in rodents, which are expressed on the surfaces of other cells. In addition to its adhesive properties, CD2 also acts as a co-stimulatory molecule on T and NK cells. CD2 is a specific marker for T cells and NK cells, and can therefore be used in immunohistochemistry to identify the presence of such cells in tissue sections.

Clinical and Translational Updates

Discounts, Gifts,
and more!

