

Mouse CDCP1 Protein, His Tag (MALS verified)

Catalog # CD1-M52H3



BIOSYSTEMS
Acro
Surprise Inside!

Synonym

CUB domain-containing protein 1, CDCP1, CD318, Membrane glycoprotein gp140, Subtractive immunization M plus HEp3-associated 135 kDa protein, SIMA135, Transmembrane and associated with src kinases, TRASK, UNQ2486, PRO5773

Source

Mouse CDCP1 Protein, His Tag (CD1-M52H3) is expressed from human 293 cells (HEK293). It contains AA Ser 30 - Leu 666 (Accession # [Q5U462](#)). Predicted N-terminus: Ser 30

Molecular Characterization

CDCP1(Ser 30 - Leu 666)
Q5U462 Poly-his

This protein carries a polyhistidine tag at the C-terminus.

The protein has a calculated MW of 73.7 kDa. The protein migrates as 90-95 kDa when calibrated against [Star Ribbon Pre-stained Protein Marker](#) under reducing (R) condition (SDS-PAGE) due to glycosylation.

Endotoxin

Less than 1.0 EU per µg by the LAL method.

Purity

>90% as determined by SDS-PAGE.

Formulation

Lyophilized from 0.22 µm filtered solution in PBS, pH7.4 with trehalose as protectant.

Contact us for customized product form or formulation.

Reconstitution

Please see Certificate of Analysis for specific instructions.

For best performance, we strongly recommend you to follow the reconstitution protocol provided in the CoA.

Storage

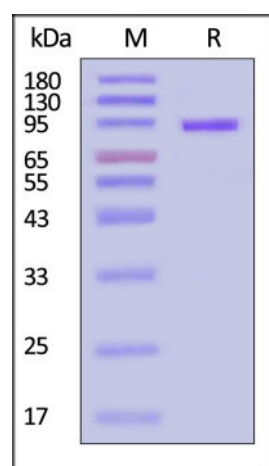
For long term storage, the product should be stored at lyophilized state at -20°C or lower.

Please avoid repeated freeze-thaw cycles.

This product is stable after storage at:

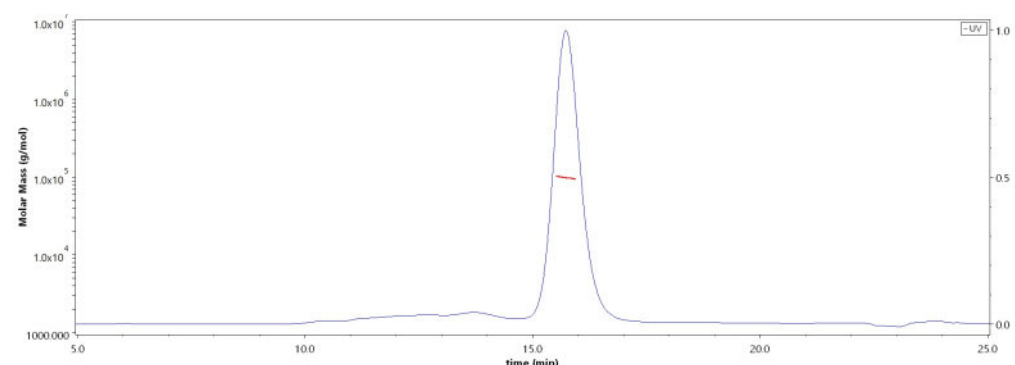
- -20°C to -70°C for 12 months in lyophilized state;
- -70°C for 3 months under sterile conditions after reconstitution.

SDS-PAGE



Mouse CDCP1 Protein, His Tag on SDS-PAGE under reducing (R) condition. The gel was stained with Coomassie Blue. The purity of the protein is greater than 90% (With [Star Ribbon Pre-stained Protein Marker](#)).

SEC-MALS



The purity of Mouse CDCP1 Protein, His Tag (Cat. No. CD1-M52H3) is more than 85% and the molecular weight of this protein is around 85-115 kDa verified by SEC-MALS.

[Report](#)

Background

CUB domain-containing protein 1, also known as CDCP1. CDCP1 is a cell surface glycoprotein that has been recognized both as a tumour marker and as a potential target to disrupt progression of cancer. CDCP1 has been shown to modulate cell-substratum adhesion and motility in colon cancer cell lines.

Clinical and Translational Updates

Discounts, Gifts,
and more!



➤ www.acrobiosystems.com

4/29/2024

Mouse CDCP1 Protein, His Tag (MALS verified)

Catalog # CD1-M52H3



**Discounts, Gifts,
and more!**



>> www.acrobiosystems.com